

## Cleveland Bridge & Engineering Company Archival Images [c.1900 - 61]

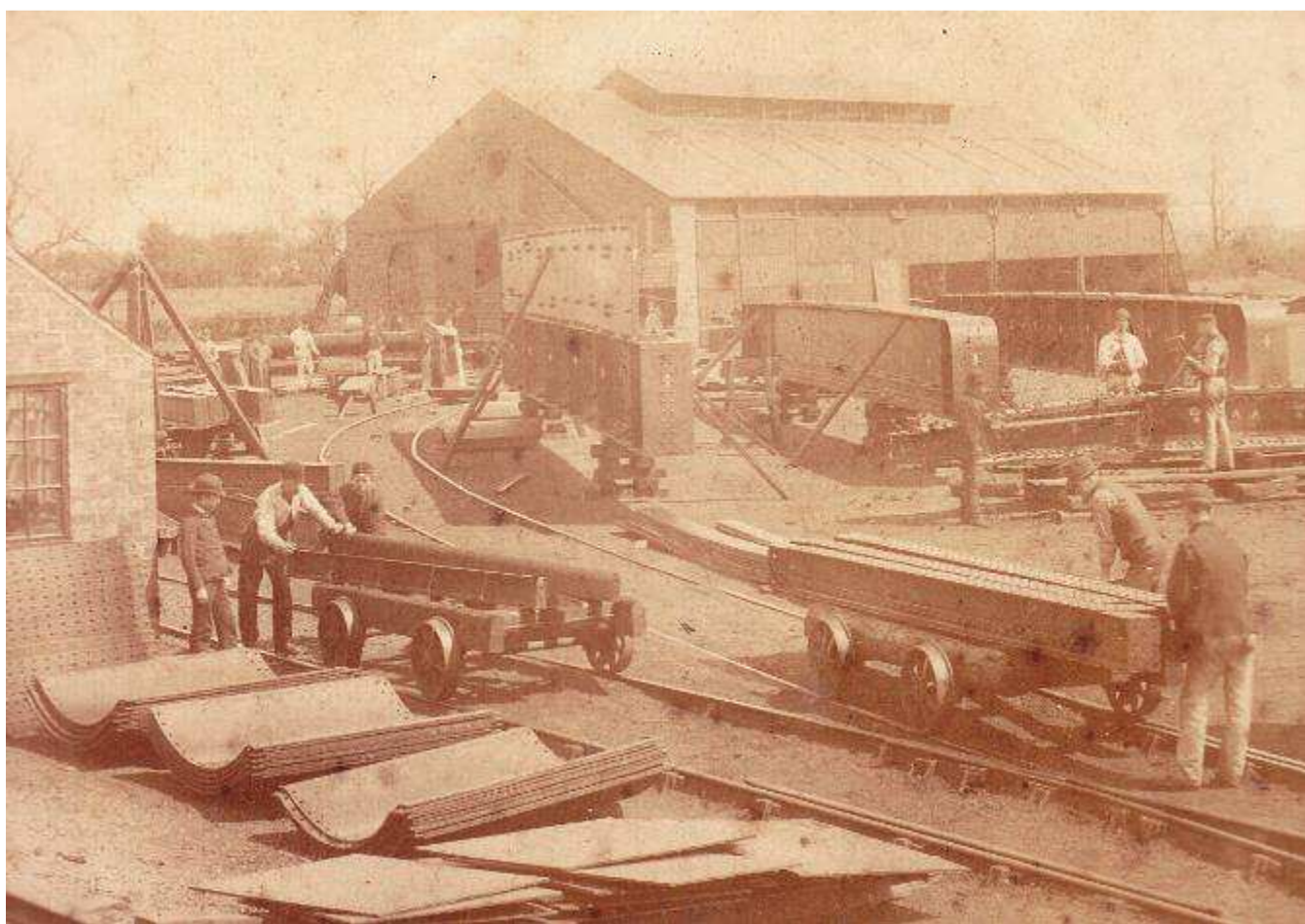
Sizes approximate.

This world-class company that merged with Dorman Long from 1990 was originally formed in 1877 and became limited in 1893. Its major bridge achievements included Victoria Falls over the Zambesi; Blue Nile, Khartoum; Tyne [King Edward]; Middlesbrough and Newport Transporters; Sydney Harbour; and the Tamar, Forth, Bosphorus and Humber Suspension Bridges. This collection of 36 items was until the 1980s in the possession of the firm. It relates to the firm's early history and several projects, particularly the Victoria Falls Bridge opened 12/9/1905 and its 1929 widening, with extraordinary images and associated correspondence. The bridge was dedicated an ASCE International Historic Civil Engineering Landmark in 1995. Items 1-15 comprise:



**1** Sepia print on mount. 12"x 10". Ms. note on verso 'View in Draughting Office. Mr. Glasser Principal Assistant at extreme left. Mr Chapman? Chief Draughtsman 3<sup>rd</sup> from right' [12 members of staff with furnishings, equipment, plans, &c.] Undated, early 20<sup>th</sup> century?

2. Sepia print on mount. 12"x 10". Ms. note on verso 'View in Manager's Office. &c. showing glass partition making separate office for support? and Waiting Room for visitors'. Shows two managerial types (not named) sat at a large table with papers and plans and a well-stocked bookcase. This and the previous image are in matching mounts. Not dated, but after c.1908 from the plan on the wall showing the Sudan Government Railway Bridge over the Blue Nile near Khartoum.



3. Sepia image on an original mount. 14"x10" [19"x13" overall] entitled 'The Cleveland Bridge and Engineering Company Limited. Offices and Works Bank Top Darlington. Mcliesh {Mcleish?} Photo. Darlington'. A detailed early view of the works when of small extent, showing men at work. Early 20<sup>th</sup> century. [illustration shows part of the image]

4. A different sepia image from the previous item, undated but probably early 20<sup>th</sup> century, of the firm's offices and works, showing men working. 15"x 9" [old mount 16"x 11" overall].

5. Three undated early 20<sup>th</sup> century press cuttings announcing contract awards:

(1) for four double-line bridges on the Lanchester Valley Branch of the North-Eastern Railway. (2) Sudan Government combined road and railway bridge over the Blue Nile at Khartoum waterway not less than 1700 ft. [completed 1909]

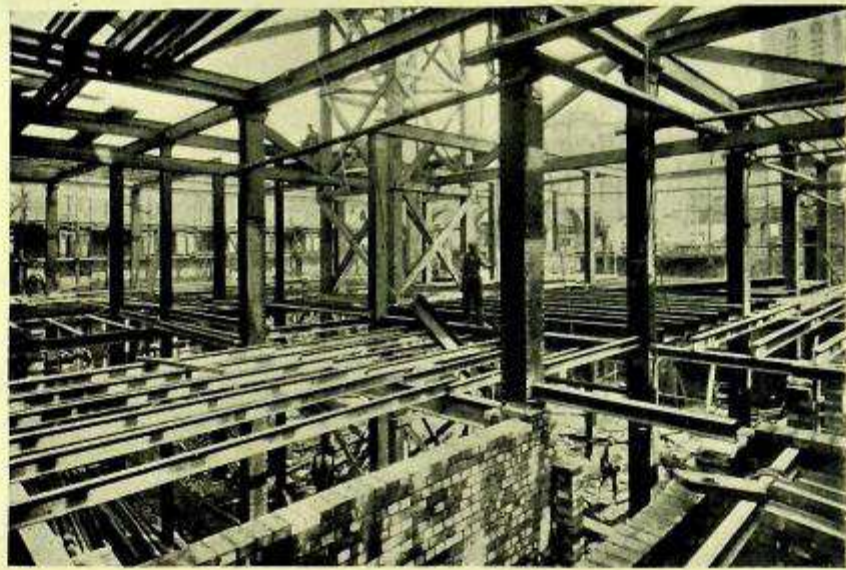
(3) Egyptian State Railway – Benha Swing Bridge new turntable.

6, 6A. Sepia view of large braced-girder bridge with 17 workmen. 14" x 10½", minor damage. Mounted on a cut-down firm's advertisement on card for steel and ironwork showing on verso tables of Rolled Steel Joists, Columns and Stanchions and views of recent work at Newbury Racecourse Grand Stand; Central Reference Library Bristol [opened 1906]; Road Bridge over the Frome, Bristol; Transit Shed, Royal Dock, Avonmouth. Undated, possibly c. 1910.

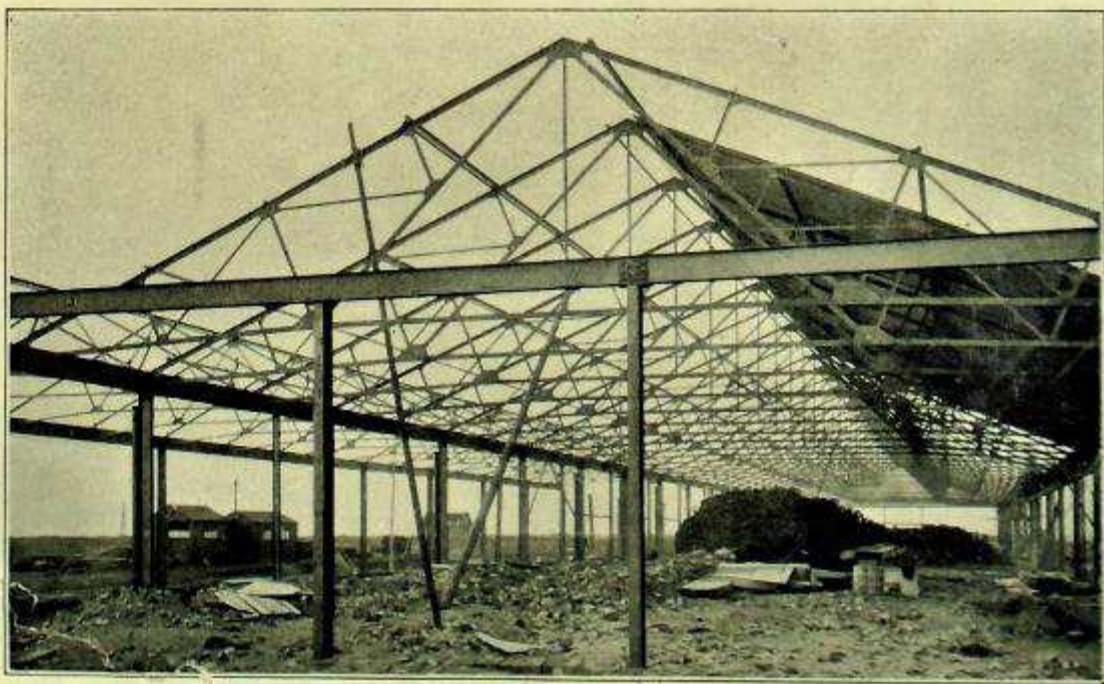


Part of image 6

Steelwork  
in  
New Central  
**REFERENCE  
LIBRARY.  
BRISTOL.**



Desi  
Manuf  
& Erec  
u



TRANSIT SHED, ROYAL DOCK, AVONMOUTH. LENGTH 425 FT

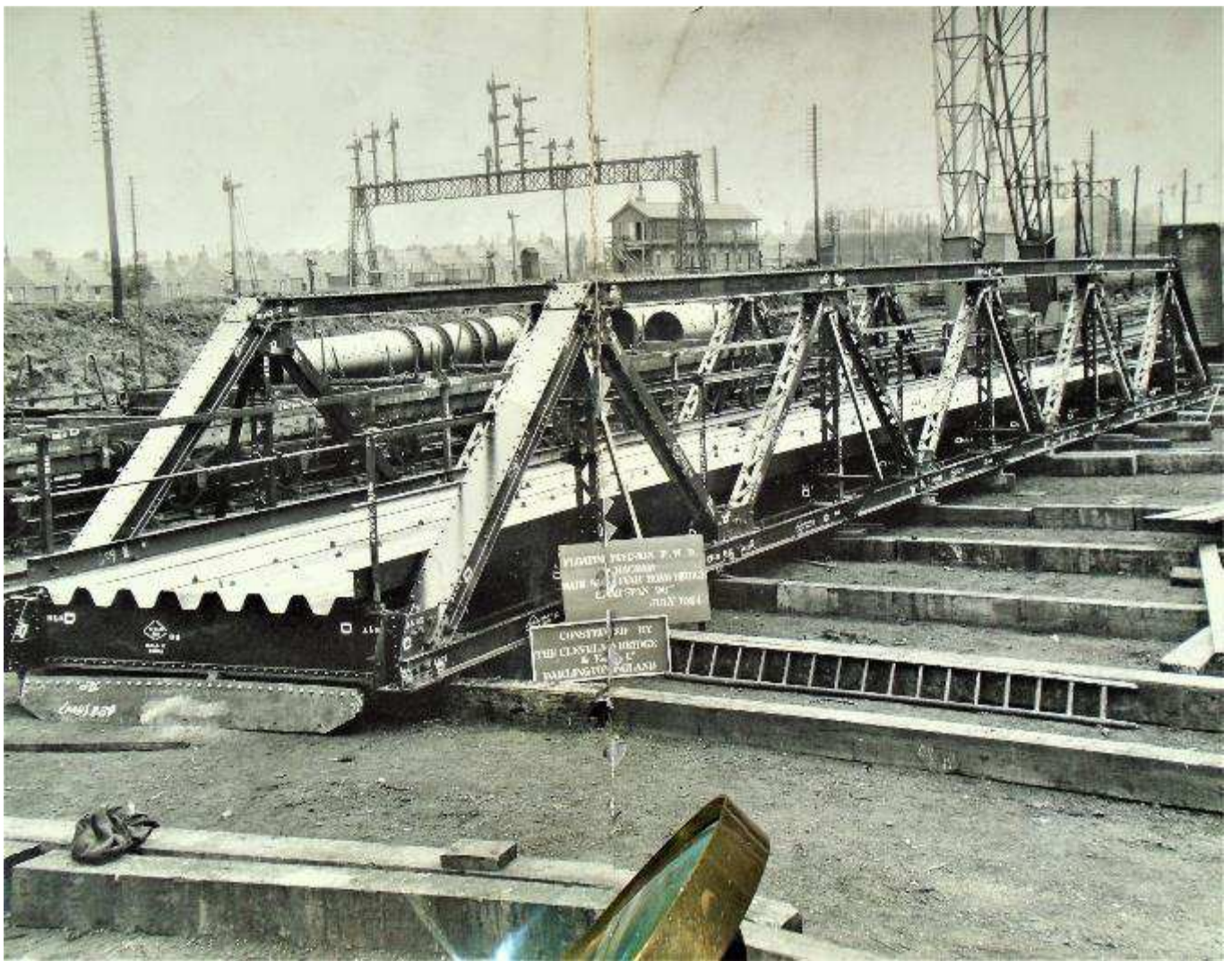
Road Bridge  
over  
RIVER FROME.  
**BRISTOL.**  
1st Span.



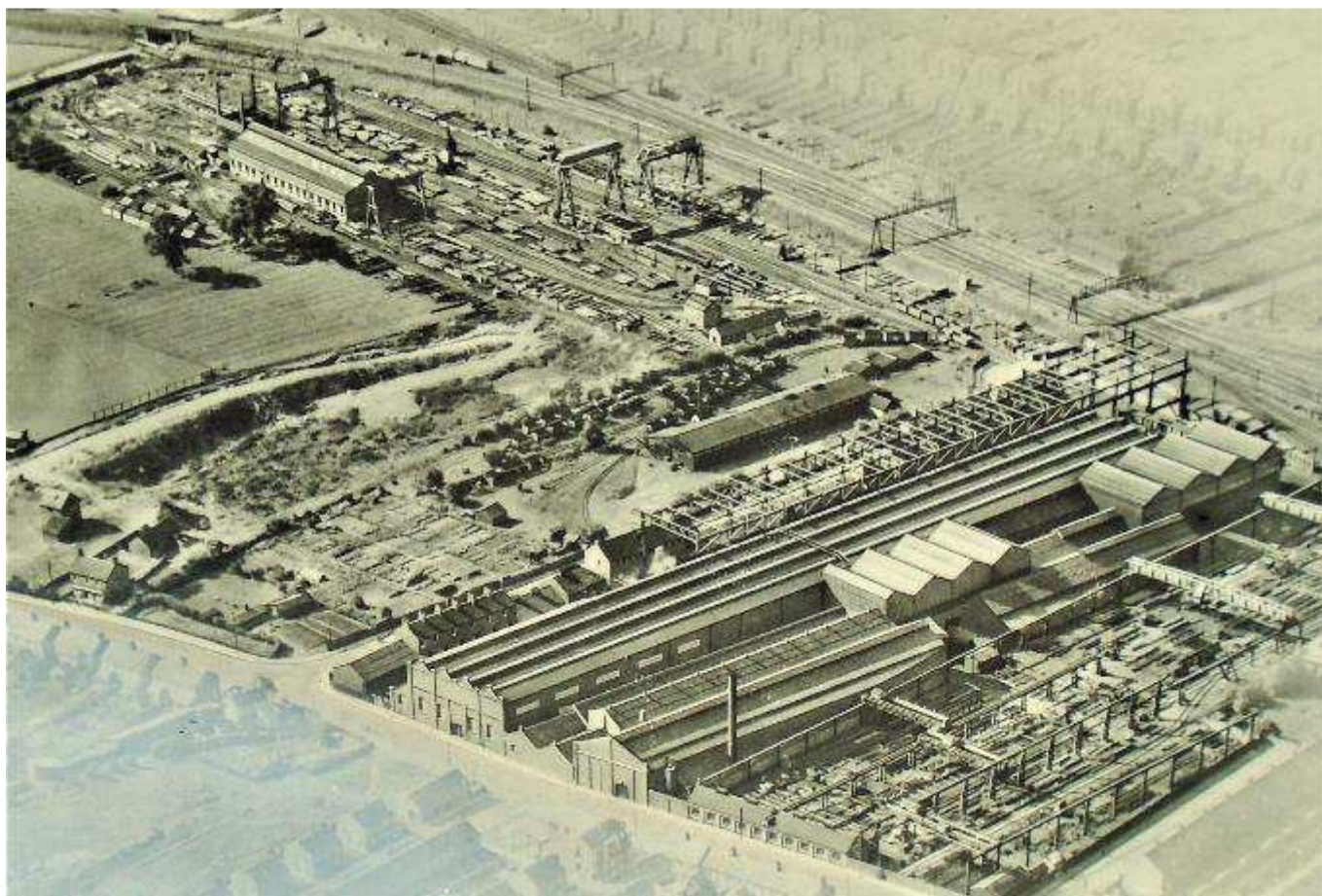
Desi  
Manu  
& Erec

Image 6A cropped

7. Black & white photo. 15"x 12". 1924. 96ft braced girder road bridge for Bag[h]dad commissioned by the Floating Division of the Public Works Dept. No. 223. Technically detailed. Centre crease and minor repairs.



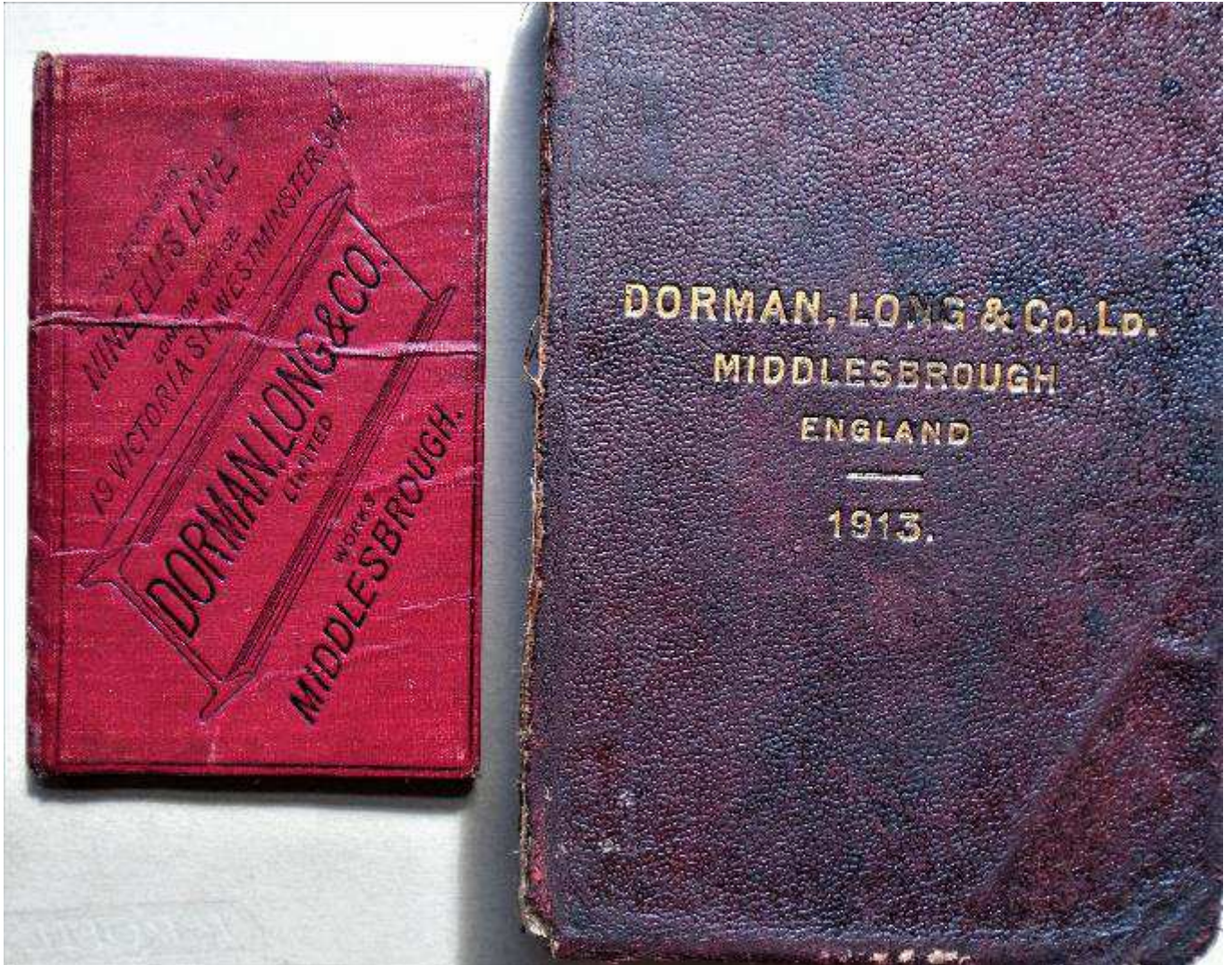
**8.** Cleveland Co. Aerial photograph of the works on Aerofilms grey card mount with graphic device 'Aerofilms, Colindale Avenue, Hendon. N.W.9.' 12"x10". Not dated – 1930s?



**9 .**Port Talbot Bypass. Black and white photograph 9"x 7". Ms. note on verso 'Port Talbot Bypass ... 'View looking south from Briton Ferry Roundabout. 3.1.1961'. With the firm's signboard.


**10.** Pocket Companion containing useful information and tables pertaining to the use of steel manufactured by Dorman, Long & Co. Limited, Middlesbrough. 1913. xl, 273. 13 full page views of furnaces, rolling mills, bridge and girder workshop, electric tramway car shed, steel frame building, 200ft girder span, sheet rolling mills and construction shop. Wo rn calf, gilt.

**11**, Dorman Long & Co. Limited. London Stockyard Nine Elms Lane. London Office 19 Victoria Street. Britannia & West Marsh Works Middlesbrough. *Steel and iron sections pocket book*. 16mo. Red and black printed cloth. 40. Not dated. London c.1900? Office oval stamp.



13. Advertisement c.1930. 'Bridge Builders and General Contractors. **The Cleveland Bridge and Engineering Co. Ltd.** Head Office and Works: Darlington. London Office: 125 Pall Mall. With images of 'Cardington Airship Shed 812 ft. long', and 'Coventry Power Station'. 28x21cm. black & white.

**BRIDGE BUILDERS AND GENERAL CONTRACTORS**



CARDINGTON AIRSHIP SHED 812 FT. LONG


**THE CLEVELAND BRIDGE AND ENGINEERING CO. LTD.**  
 Head Office and Works: DARLINGTON London Office: 125 PALL-MALL

PONTOONS

FLOATING LANDING STAGES

DOCK GATES

STEEL PIPE LINES



COVENTRY POWER STATION

CONSTRUCTIONAL WORK OF ALL TYPES

SPECIALISTS IN DEEP FOUNDATION WORK

14. 12"x 8" black and white image of the Tamar Bridge nearing completion in 1960/1. Stamp on verso 'Nicholas Horne Ltd Photographers and Artists, Totnes, Devon 8073/36'

15. Two unused 'Colourmaster' postcards showing the newly opened Tamar Bridge [one aerial, showing Brunel's masterpiece alongside]. Undated c.1961





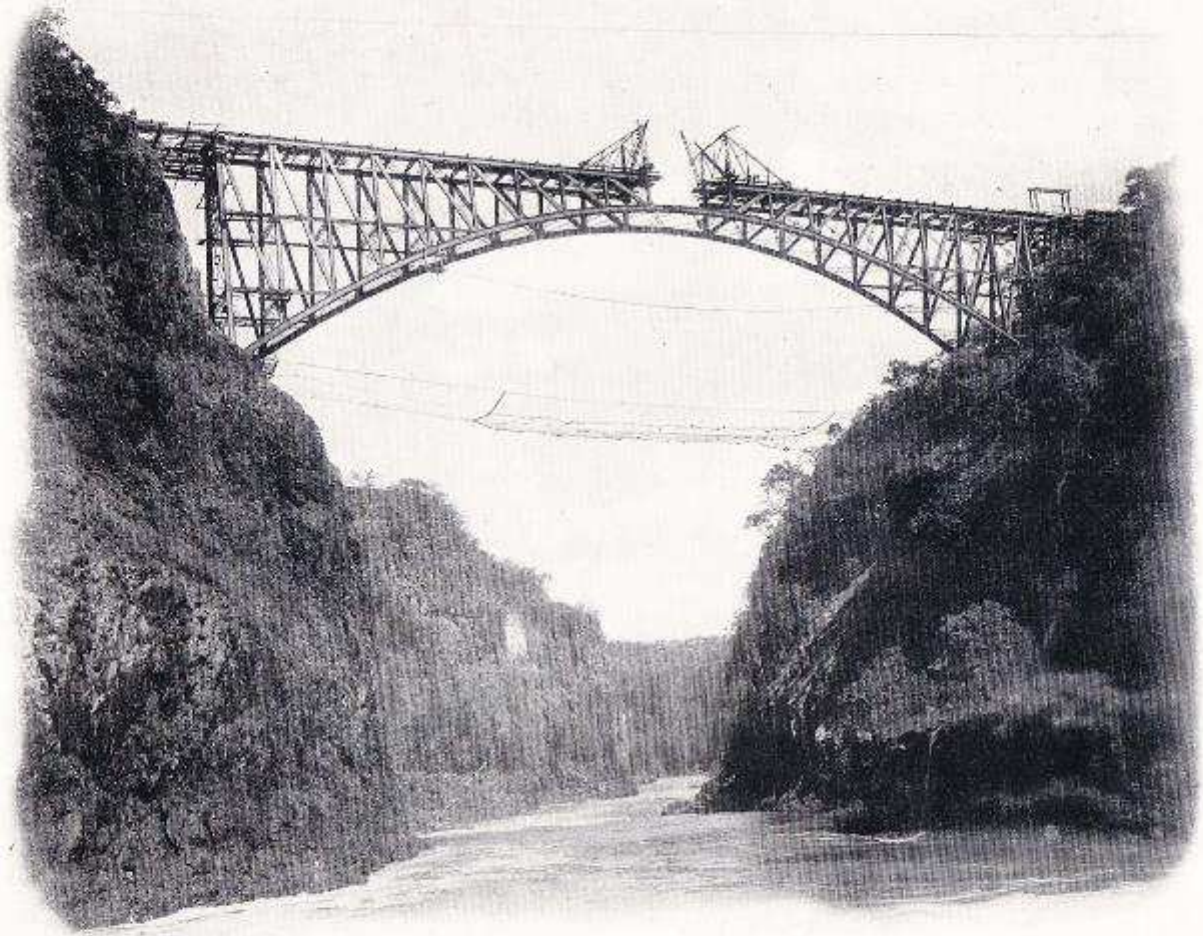
## Victoria Falls Bridge over the Zambesi River: Items 16-36



**16.** Victoria Falls Bridge. Albumen print. Undated c.1904?. Works progress view when arch about half complete. 8"x 6". Firm's stamp on verso. Gorge side highlighted by mist.

17. Victoria Falls Bridge. Promotional print headed 'The Cleveland Bridge and Engineering Co., Limited, Darlington' with title 'Victoria Falls Bridge over the Zambesi River, Rhodesia.' View taken when work nearing completion in 1905 Firm's Ms. note re. publication query. 11"x 9".

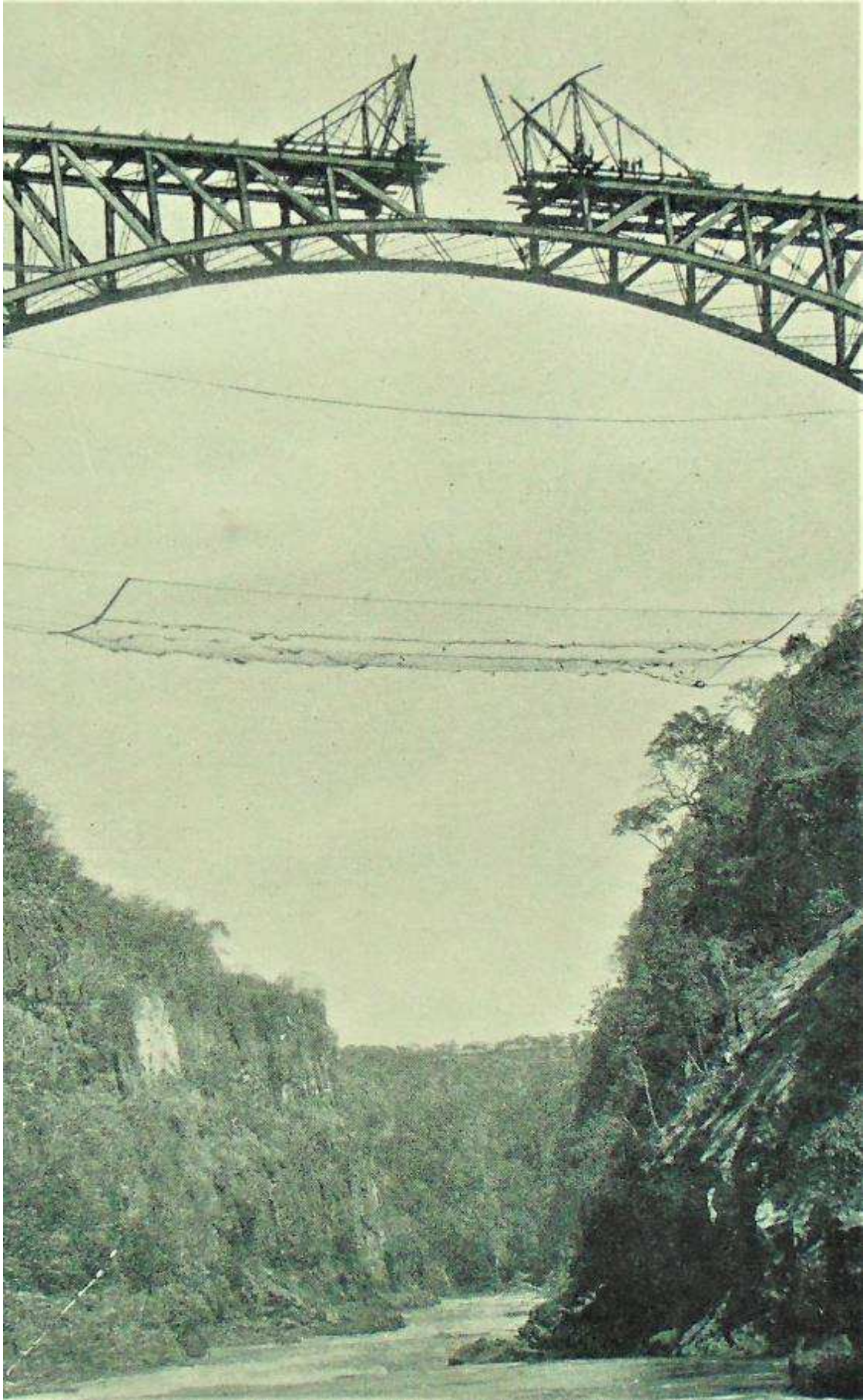
CLEVELAND BRIDGE & ENGINEERING CO., LIMITED,  
DARLINGTON.



VICTORIA FALLS BRIDGE,  
OVER THE ZAMBESI RIVER, RHODESIA

VIEW TAKEN WHEN NEARING COMPLETION. 1905.

*Photo. available?  
Surfer Beach  
A. Min.  
(Buyer)*



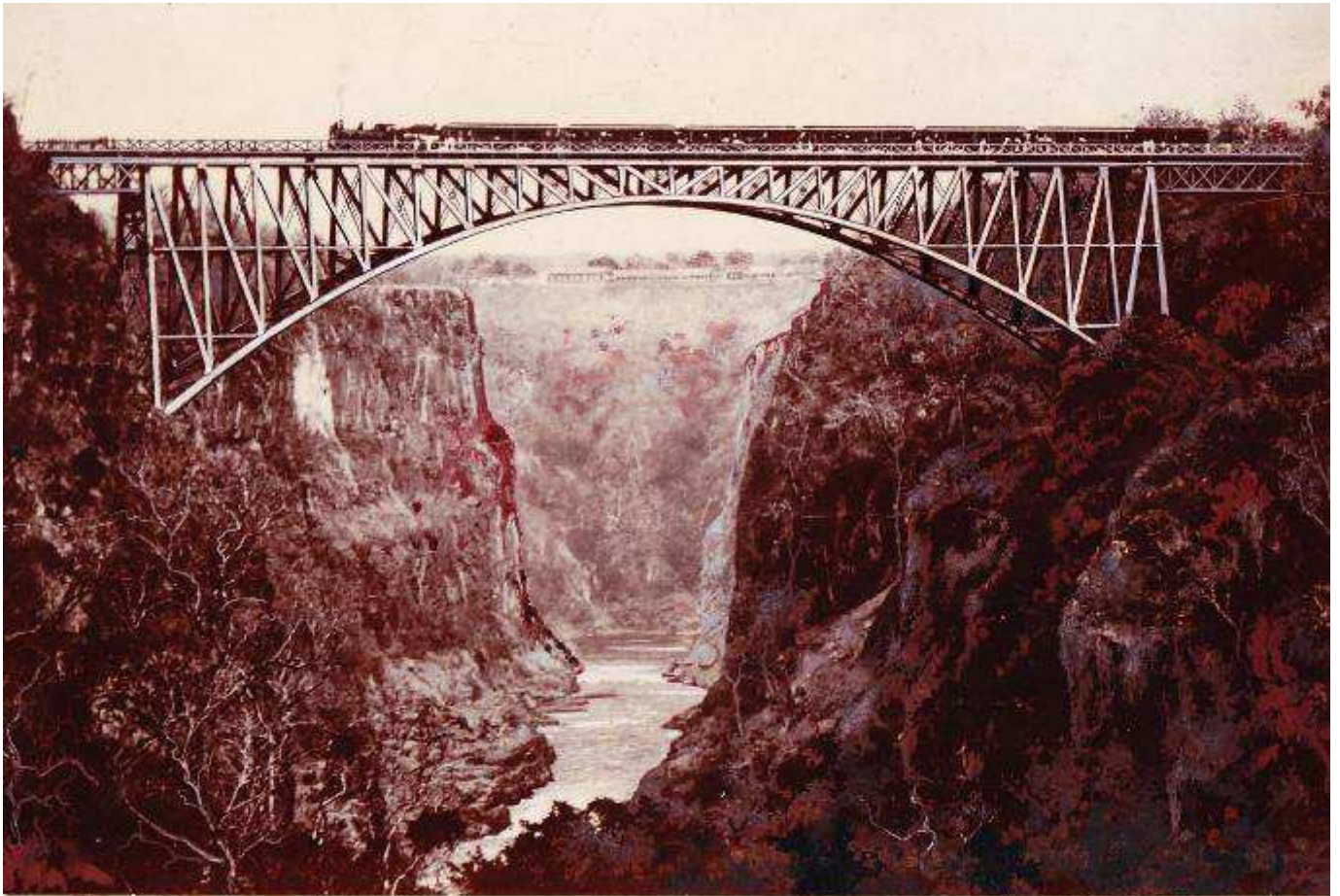
Enlargement of central part of 17 showing safety net

18. Another copy of 17 [without the manuscript note]

19. *The Mechanical World*. Vol. XLI No. 1056 29 March 1907. 145-156. The firm's copy included for the abstract of an Institution of Civil Engineers paper: by G.A. Hobson, designer of 'The Victoria Falls Bridge'.

20. Victoria Falls Bridge. Press cutting announcing reconstruction project [1928-29].

21. Victoria Falls Bridge. Press cutting giving details after reconstruction embarked upon. [1929].



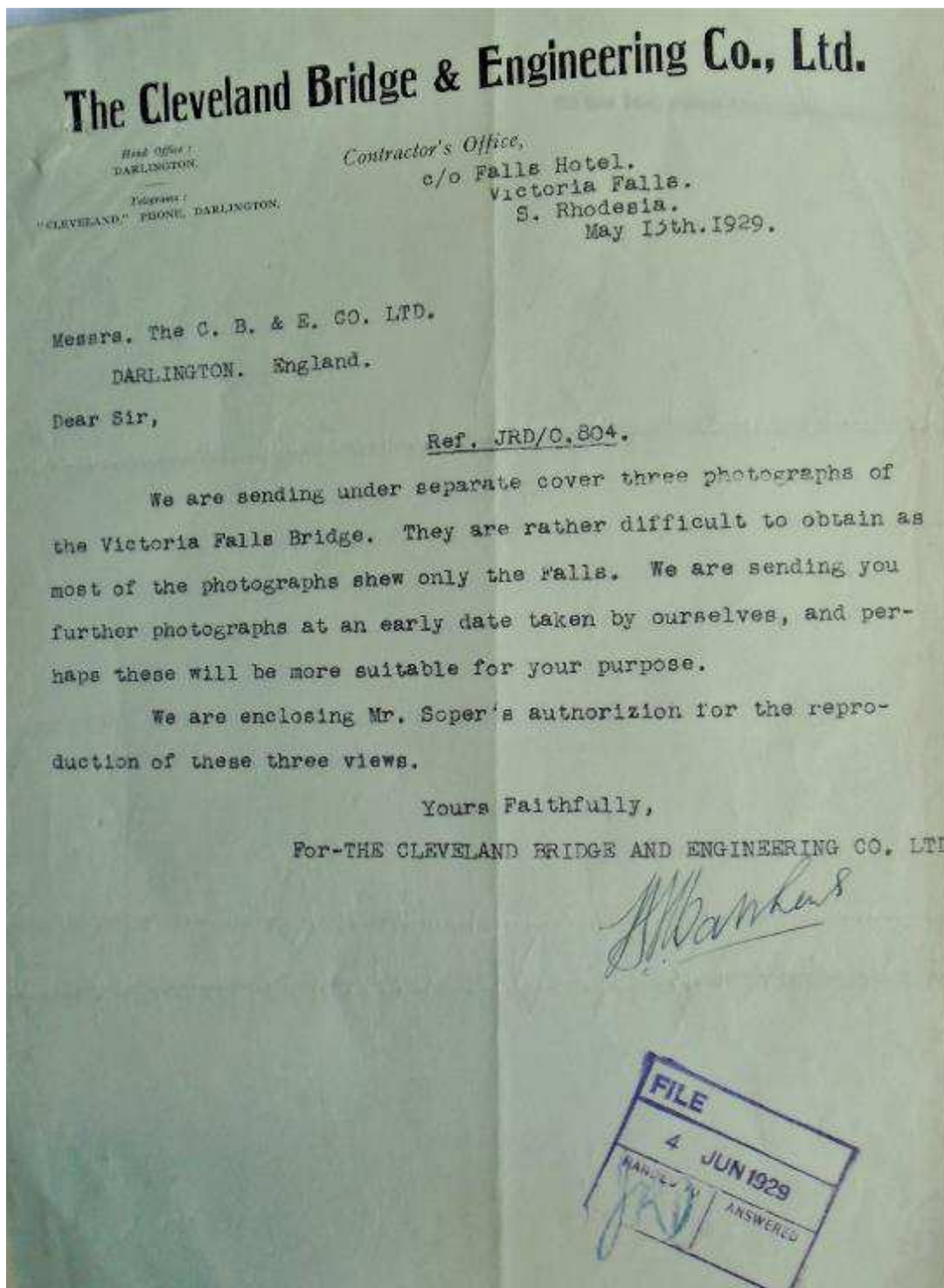
22. Promotional sepia print on mount of Victoria Falls Bridge over the Zambesi showing passenger train with 7 carriages crossing in 1929. Oval company stamp on verso 11"x 8". The extent of the gorge is about 420 ft below railway level and 500 ft wide.

23. Victoria Falls Bridge. The firm's press cutting from *Modern Transport*, 12 January 1929. With reproduction of the image described above bearing the train.

24. Victoria Falls Bridge. The firm's press cutting 'Strengthening of Victoria Falls Bridge' from *Modern Transport*, 8 February 1930. A detailed, well-illustrated account of the work carried out in 1929 with 4 large views including a reproduction of the previous image with train.

25. Als from J.W. Soper, Victoria Falls P.O., S. Rhodesia, to Messrs. The Cleveland Bridge & Engineering Co. 7<sup>th</sup> May 1929. Giving permission for the use of photographs with the acknowledgement. 'Photo by J.W. Soper, Victoria Falls in small letters in one of the corners'. Firm's office stamp. [with]

26. ALS from A. Bankes? at the firm's office c/o Falls Hotel, Victoria Falls, Rhodesia, to its Darlington H.Q. dated 13 May 1929 enclosing Soper's letter, and three photographs under separate cover, with the comment that 'they are rather difficult to obtain ... '.



**27.** Victoria Falls Bridge Widening. Black & white photo on completion c.1930. 6"x 10". Firm's stamp on verso and No. 'A 236'.

**28.** Victoria Falls Bridge Widening. Black & white photo on completion c.1930. Similar to previous entry but 8"x 12". Firm's stamp on verso and '4'.



**29.** Victoria Falls Bridge Widening. Black & white photo on completion c.1930. 7½"x 10". Similar but not identical view to the previous entry. Firm's stamp on verso. Tissue guard.

**30.** Harker R.E. 'Engineering Feats of the Past. XIV. How they built the World's Highest Bridge'. From *The Accessory Aug-Sept.* 175-176. Not dated, but 1930s. With a reproduction of the previous image acknowledged to the firm.

**31.** Victoria Falls Bridge Widening. Black & white photo on completion c.1930. Full span from about railway height from top of gorge. Firm's stamp on verso and ms. note 'Please retain'. Used in item 32

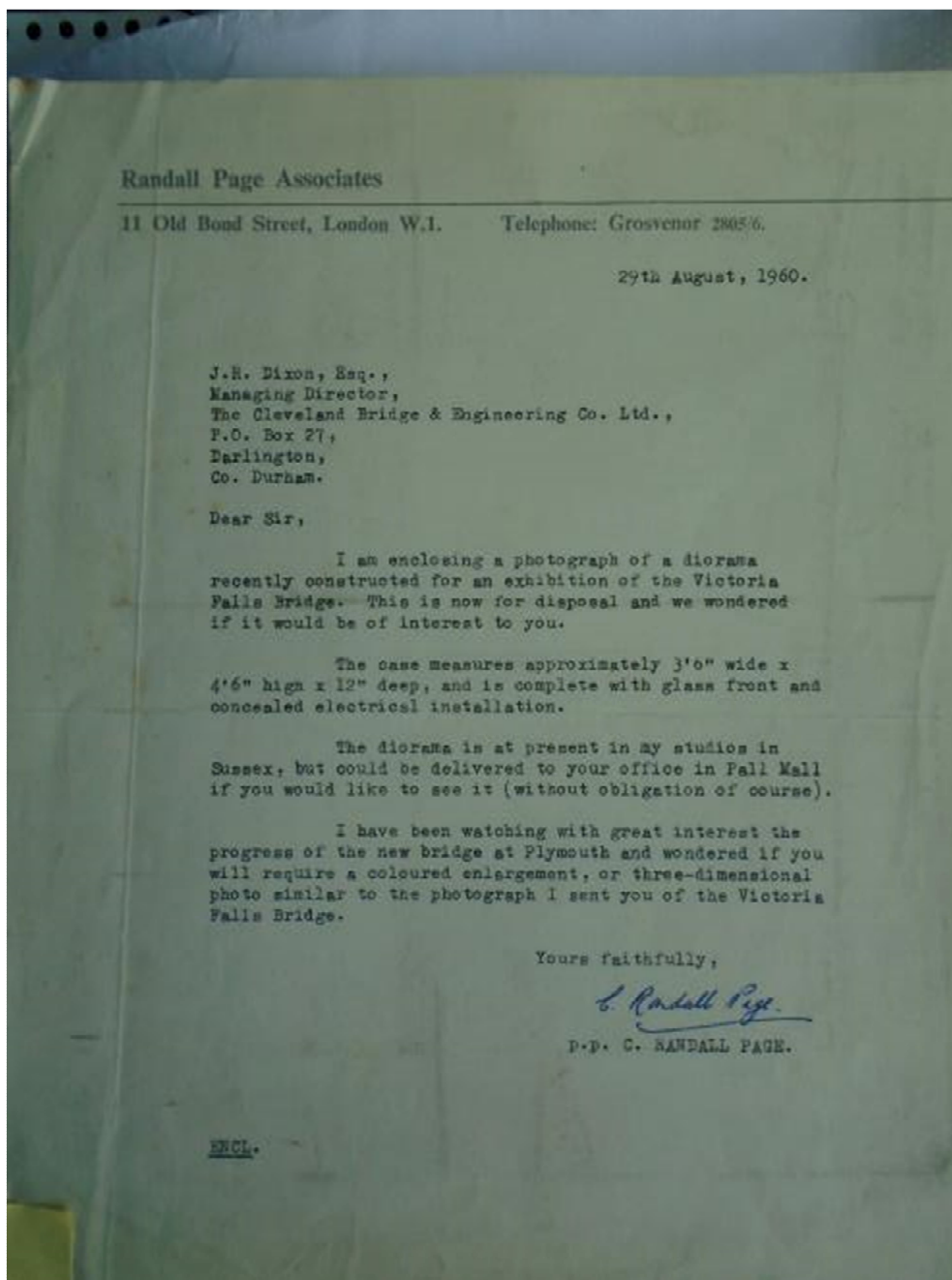
**32.** Peirson, J.G. 'The Victoria Falls Bridge'. Cutting from *The Railway Magazine* July 1938. 2. [with] Durrants press cuttings slip to 'Cleveland B'. With reproduction of item 32 image

**33.** Victoria Falls Bridge Widening. Dark sepia photo of the bridge on completion c.1930. 6"x 8". Scenic view from near river level with figures in foreground. Firm's stamp on verso.

**34.** Als from L. Friedlander, Photographic Librarian to the Chief Information Officer. Lusaka, Northern Rhodesia, to J.R. Dickson, Managing Director, The Cleveland Bridge & Engineering Co. Ltd dated 18<sup>th</sup> Nov. 1958. Enclosing receipt [not present] of payment for photographs supplied of the Victoria Falls Bridge. If used for publicity please acknowledge to the Northern Rhodesia Government Information Department. On Northern Rhodesia Information Dept. Headed notepaper.

**35.** Als from C. Randall Page Associates, 11 Old Bond St., London to J.R. Dickson, Managing Director, The Cleveland Bridge & Engineering Co. Ltd. 29 August 1960. Offering a diorama recently made for an exhibition of the Victoria Falls Bridge ... 'The case measures approximately 3'6" wide x 4'6" high x 12" deep and is complete with glass front and concealed electrical installation ... watching with great interest the progress of the

new bridge at Plymouth and wondered if you will require a coloured enlargement or three-dimensional photo similar to the photograph I sent you of the Victoria Falls Bridge



36. Evocative coloured educational poster of 'A Mail Train at Victoria Falls' crossing the bridge in *British Empire* days [after the c.1930 widening with figures in European dress. Not dated. Artist's signature [illegible?]. 15"x10", [17"x21" overall]. No. '92' of an African series of views.

*Books on industrial & Transport History. The Book House. Catalogue 115, Spring 1989.* Included for the details of two of Cleveland Bridge's albums of project images already sold just before the writer visited The Book House [Chris Irwin] in 1989 and purchased from him this then unlisted collection.

Roland Paxton. Listed 30 June 2022. Updated 15 Sept. 2022