

Part III

Lighthouses by Smith and the Stevensons – an illustrated chronology

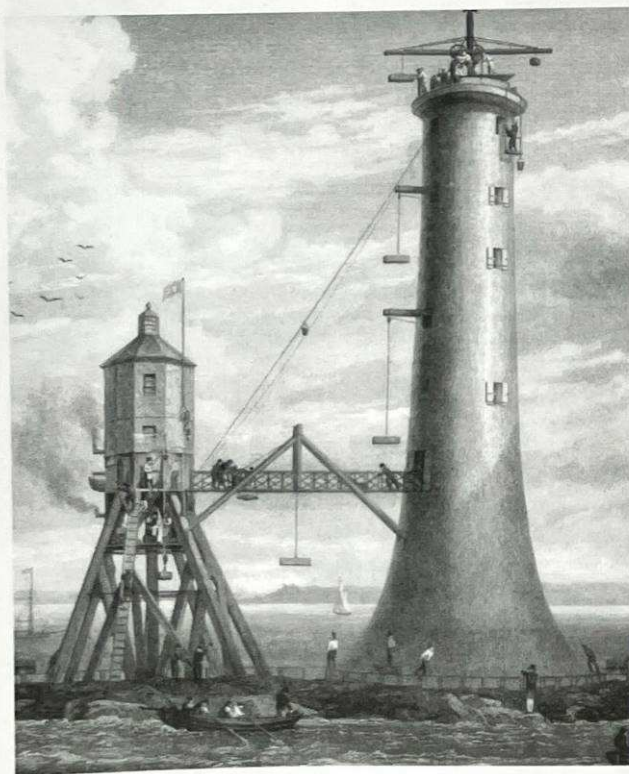
[updated from the list in Appendix 2 of *Bright Lights: the Stevenson Engineers* (2, 191–195) which includes additional detail and grid references]

• *Major Light* > 15 miles

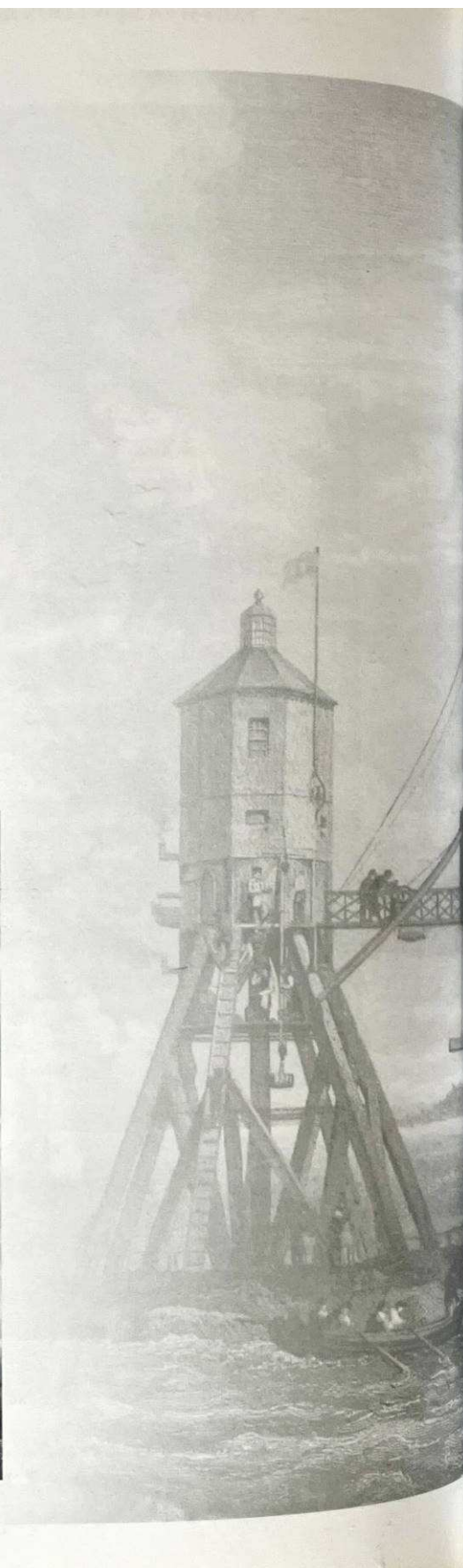
AIS – *Automatic Identification System*

DGPS – *Differential Global Positioning System*

RACON – *RAdar beaCONs*



The Bell Rock works in August 1810 (3, pl. XVIII)



Thomas Smith

Lighthouse	Established	Automated	Notable Historic Event	Status (2010)
Kinnaird Head • (Fraserburgh)	1787	-	Closed in 1990 New light established in 1990•	Now Museum of Scottish Lighthouses 1990 light Operational
Mull of Kintyre• (Argyll)	1788	1996	Rebuilt 1820's by Robert Stevenson	Operational
North Ronaldsay • (Orkney)	1789	1998	New lighthouse built by Alan Stevenson 1954	Original Beacon Ancient Monument 1954 light Operational RACON Public Access Station (Seasonal) Visitors Centre and privately owned holiday cottages Non NLB lights
Tay Lights (Firth of Tay)	Already existing, modernised	1789		
Eilean Glas • (Scalpay, Harris)	1789	1978	New light built 1820s by Robert Stevenson	Original tower Historic Monument New Tower Operational RACON Cottages privately owned
Pladda • (Arran, Bute)	1790	1990	New light built 1820s by Robert Stevenson	Operational Cottages privately owned Non NLB light
Leith Pier (Midlothian)	Already existing, modernised	1790		
Portpatrick (Wigtownshire)	1790		Discontinued 1900	
Little Cumbrac (Bute)	1793		First 1757 lighthouse tower still exists	Owned/operated by Clyde Port Authority
Pentland Skerries • (Orkney)	1794	1994	New lights built 1830 by Robert Stevenson	Operational Cottages privately owned
Cloch • (Renfrewshire)	1797			Owned/operated by Clyde Port Authority
Inchkeith •• (Fife)	1804	1986		Operational
Start Point •• (Sanday, Orkney)	1806	1962	Rebuilt 1870 by David Stevenson	Operational Public Access Station (Seasonal)

• With Robert Stevenson

Robert Stevenson

Prior to 1808 Robert Stevenson assisted Thomas Smith with Cloch, Inchkeith and Start Point

Lighthouse	Established	Automated	Notable Historic Event	Status (2010)
Bell Rock • (North Sea)	1811	1988	Fire 1987	Operational RACON
Toward Point (Argyll)	1812	1974		Owned/operated Clyde Port Authority
Isle of May • (Fife)	1816	1989	Isle of May site of first Scottish Lighthouse in 1636. Original tower modified circ. 1816, still exists.	Operational Cottages privately owned
Corsewall • (Wigtownshire)	1817	1994		Operational AIS Station Cottages now operate as hotel
Point of Ayre • (Isle of Man)	1818	1991	A second light "The Winkie" was established around 1890, this was discontinued in 2010.	Operational RACON Cottages privately owned
Calf of Man (Isle of Man)	1818			Discontinued 1875 Now owned by Manx National Heritage
Sumburgh Head • (Shetland)	1821	1991	Rebuilt 1914	Operational DGPS Station AIS Station Cottages privately owned
Rinns of Islay • (Argyll)	1825	1998		Operational
Buchan Ness • (Aberdeenshire)	1827	1988		Operational RACON Cottages privately owned
Cape Wrath • (Sutherland)	1828	1998		Operational Cottages privately owned
Tarbat Ness • (Ross & Cromarty)	1830	1985		Operational RACON Cottages privately owned

Mull of Galloway • (Wigtownshire)	1830	1888	Operational Public Access Station (Seasonal)
Dunnet Head • (Caithness)	1831	1889	Operational Cottages privately owned
Douglas Head • (Isle of Man)	1832	1886	Operational Cottages privately owned
Girdle Ness • (Aberdeenshire)	1833	1991	Operational DGPS Station RACON Cottages privately owned
Barra Head • (Barra)	1833	1980	Operational
Lismore • (Argyll)	1833	1965	Operational Cottages privately owned

Alan Stevenson

Little Ross (Kirkcudbright)	1843	1960	Operational Cottages privately owned
Isle of May (Leading light)	1844		Discontinued 1887 when North Carr Lightship became operational
Skerryvore • (Argyll)	1844	1994	Operational RACON
Covesea Skerries • (Moray)	1846	1984	Operational
Cromarty Point • (Ross & Cromarty)	1846	1984	Operational Cottages privately owned
Cromarty (Ross & Cromarty)	1846	1985	Discontinued 2006
Loch Ryan (Cairn Point)	1847	1964	Operational
Noss Head • (Caithness)	1849	1987	Operational Cottages privately owned

Lighthouse	Established	Automated	Notable Historic Event	Status (2010)
Ardnamurchan • (Argyll)	1849	1988		Operational Public Access Station (Seasonal) Visitors Centre and privately owned holiday cottages
Sanda • (Kintyre, Argyllshire)	1850	1993		Operational Cottages privately owned
Hoy Sound (High) • (Orkney)	1851	1978		Operational Cottages privately owned
Hoy Sound (Low) • (Orkney)	1851	1966		Operational Cottages privately owned
Arnish Point (Stornoway)	1853	1963	Transferred to Stornoway Harbour 2003	
Thomas Stevenson				
Tay South Ferry (Firth of Tay)	1849		Discontinued, still exists	Non NLB light
David and Thomas Stevenson				
** Without Thomas Stevenson				
Out Skerries •• (Whalsay, Shetland)	1854	1972		Operational Cottages privately owned
Muckle Flugga •• (North Unst, Shetland)	1854	1995	Rebuilt 1857 with Thomas	Operational
Davaar •• (Campbelltown, Argyll)	1854	1983		Operational Cottages privately owned
Ushenish • (South Uist)	1857	1970	Cottages demolished	Operational
Rona • (Inverness-shire)	1857	1975		Operational

Kyleakin (Skye)	1857	1960	Gavin Maxwell, author, bought the lighthouse cottages in 1963	Discontinued 1993 on construction of the Skye Bridge. Eilean Bàn Trust ownership in process
Isle of Ornsay • (Skye)	1857	1962		Operational Cottages privately owned
Inchcolm (Fife)	1858			Discontinued
Rubha Nan Gall (Mull)	1857	1960		Operational Cottages privately owned
Cantick Head • (Orkney)	1858	1991		Operational Cottages privately owned
Bressay • (Shetland)	1858	1989		Operational Cottages privately owned
Ruvaal • (Islay)	1859	1983		Operational Cottages privately owned
Corran Point (Inverness-shire)	1860	1970		Operational Cottages privately owned
Fladda (Firth of Lorne)	1860	1956		Operational Cottages privately owned
McArthur's Head (Islay)	1861	1969	Cottages demolished	Operational
St Abb's Head • (Berwickshire)	1862	1993		Operational RACON Cottages privately owned
Holburn Head (Caithness)	1862	1988		Discontinued 2003
Butt of Lewis • (Lewis)	1862	1998		Operational DGPS Station AIS Station
Monach Isles • (North Uist)	1864		Discontinued 1942 Brought back in to service 2009	Operational
Skervuile (Jura)	1865	1945		Operational

Lighthouse	Established	Automated	Notable Historic Event	Status (2010)
Auskerry • (Orkney)	1867	1961		Operational Cottages privately owned
Loch Indaal (Islay)	1869	1950 Approx		Operational
Scurdie Ness • (Montrose)	1870	1987		Operational RACON Cottages privately owned
Stoer Head • (Sutherland)	1870	1978		Operational Holiday Homes
Dubh Arrach • (Argyll)	1872	1971	Red Band added 1890	Operational
Turnberry • (Ayrshire)	1873	1986		Operational Cottages privately owned
Chicken Rock • (Isle of Man)	1875	1961	Fire 1961	Operational
Holy Island (Inner) (Arran)	1877	1977		Operational Cottages privately owned
Langness (Isle of Man)	1880	1996		Operational Cottages privately owned
Thomas and David A. Stevenson				
Fidra • (East Lothian)	1885	1970		Operational
Oxcars (Midlothian)	1886	1894	Transferred to Forth Ports 1990s	
Ailsa Craig • (South Ayrshire)	1886	1990		Operational Cottages privately owned

David A. Stevenson

Note: The majority of lights were built as Automatic.

The Northern Lighthouse Board's programme to remove gas from installations and convert to solar power meant the removal of

a number of minor lights. The majority were replaced by aluminium framework towers clad with GRP (Glass Reinforced Plastic) daymark boards, or sectional GRP towers to reduce the ongoing maintenance burden of the structures.

Grey Rocks (Sound of Mull)	1890	Rebuilt 1991	Operational
Dubh Sgeir (Barra)	1891	Rebuilt 2003	Operational
Weaver Point (North Uist)	1891	Rebuilt 2003	Operational
Sgeir Leadh (Castlebay, Barra)	1891		Discontinued 2004
Calvay (South Uist)	1891	Rebuilt 1985	Operational
Dunollie (Oban)	1892		Operational
Crowlin (Ross & Cromarty)	1892	Rebuilt 2001	Operational
Kyle Rhea (Skye)	1892		Operational
Fair Isle South • (Skaddan) (Shetland)	1892	1998 Scotland's last manned lighthouse	Operational Cottages privately owned
Fair Isle North • (Skroo) (Shetland)	1892	1983	Operational Cottages demolished at time of Automation
Reisa an t'Struith (Jura)	1892	Rebuilt 2001	Operational
Carlaway (Lewis)	1892	Rebuilt 2000	Transferred to Western Isles Council 1990s
Helliar Holm (Orkney)	1893	1967	Operational

Lighthouse	Established	Automated	Notable Historic Event	Status (2010)
Heston Island (Kirkcudbright)	1893		Rebuilt 1996	Operational
Fugla Ness (Shetland)	1893			Operational
Eyre Point (Raasay)	1893		Rebuilt 2001	Operational
Dunvegan (Skye)	1893		Rebuilt 2002	Operational
Vaila Sound (Shetland)	1894		Rebuilt 2005	Operational
Loch Eribol (Sutherland)	1894		Rebuilt 2003	Operational
Rattray Head • (Aberdeenshire)	1895	1982		Operational RACON
Skerry of Ness (Orkney)	1895		Rebuilt 1981	Operational
Hillswick (Shetland)	1895		Rebuilt 2001	Operational
Balta Sound (Shetland)	1895		Rebuilt 2003	Operational
Sule Skerry • (West of Orkney)	1895	1982		Operational RACON
Stroma • (Caithness)	1896	1996		Operational
Tod Head (Kincardineshire)	1896	1988		Discontinued 2007
Scarinish • (Tiree, Argyll)	1897			Operational
No Ness (Shetland)	1897		Discontinued	

Muckle Roe (Shetland)	1897	Rebuilt 2001	Operational
Cava (Orkney)	1898	Rebuilt 1988	Operational
Noup Head • (Westray, Orkney)	1898	1964	Operational
Flannan Isles • (Ross & Cromarty)	1899	1971	Operational
Tiupan Head • (Lewis)	1900	1985	Operational
Greinam (Lewis)	1900		Owned/operated by Western Isles Council
Killantringan (Wigtownshire)	1900	1988	Discontinued 2007
Duart Point (Mull)	1901	Memorial to William Black (Novelist)	Operational
Barns Ness (East Lothian)	1901	1986	Discontinued 2007
Bunessan (Mull)	1901	Rebuilt 2001	Operational
Hoxa Head (Orkney)	1901	Rebuilt 1996	Operational
Bass Rock (East Lothian)	1902	1988	Operational
Scalasaig (Colonsay)	1903	Rebuilt 2003	Operational
Lady Isle (Ayrshire)	1903		Operational RACON
The Garvellachs (Firth of Lorn)	1904	Rebuilt 2003	Operational
Suther Ness (Shetland)	1904	Rebuilt 1995	Operational

Lighthouse	Established	Automated	Notable Historic Event	Status (2010)
Whitehill (Shetland)	1904		Rebuilt 2001	Operational
Sgeir Bhuidhe (Port Appin)	1904		Rebuilt 2002	Operational
Mull of Eswick (Shetland)	1904		Fell into the sea 1994 New light established 1995	Operational
Craigton Point (Inverness)	1904		Rebuilt 2001	Operational
Symbister Ness (Shetland)	1904		Rebuilt 1997	Operational
Rova Head (Shetland)	1904		Rebuilt 1998	Operational
Hyskeir • (Inverness-shire)	1904	1997		Operational
Ardtreck (Skye)	1904		Rebuilt 2002	Operational
Roseness (Orkney)	1905		Rebuilt 1983	Operational
Holy Island (Outer) • (Arran)	1905	1977		Operational Cottages privately owned
Swona (Orkney)	1906		Rebuilt 1984	Operational
Green Island (Sound of Mull)	1906		Rebuilt 2001	Operational
Ruadh Sgeir (Jura)	1906		Rebuilt 1983	Operational
Eigg	1906		Rebuilt 1985	Operational
Lady Rock (Lismore)	1907		Rebuilt 2001	Operational
Eilean a' Chuirm (Islay)	1907			Operational

Papa Stronsay (Orkney)	1907	Rebuilt 2002	Operational
Canna	1907	Rebuilt 1986	Operational
Elie Ness • (Fife)	1908		Operational
Ornsay Beacon (Skye)	1908	Rebuilt 2002	Operational
Eilean Trodday (Skye)	1908	Rebuilt 2002	Operational
Firths Voe • (Shetland)	1909		Operational
Cairns of Coll (Coll)	1909	Rebuilt 1987	Operational
Ruff Reef (Orkney)	1909		Operational
Ness of Sound (Shetland)	1909	Rebuilt 1998	Operational
Calf of Eday (Orkney)	1909		Operational
Dubh Sgeir, Luing (Sound of Luing)	1910	Rebuilt 1990	Operational RACON
Sandaig (Glenelg)	1910	Rebuilt 2002	Operational Original tower now an information point at Glenelg Ferry
Lothar Rock (Orkney)	1910		Operational RACON
Neist Point • (Skye)	1910	1990	Operational AIS Station Cottages privately owned
Na Cuiltean (Jura)	1911	Rebuilt 2004	Operational
Rubh Reidh • (Gairloch)	1912	1986	Operational AIS Station Cottages privately owned

Lighthouse	Established	Automated	Notable Historic Event	Status (2010)
Milaid Point (Lewis)	1912		Rebuilt 1998	Operational
Crammag Head • (Wigtownshire)	1913		Rebuilt 2009	Operational
Cairnbulg Briggs (Aberdeenshire)	1914			Operational
Maughold Head • (Isle of Man)	1914	1993		Operational Cottages privately owned
Copinsay • (Orkney)	1915	1991		Operational Cottages privately owned
Clythness (Caithness)	1916	1964		Discontinued 2010
Vaternish (Skye)	1924			Operational
Duncansby Head • (Caithness)	1924	1997	House demolished in 2002	Operational RACON
Brough of Birsay • (Orkney)	1925			Operational
Ardtornish (Sound of Mull)	1927		Rebuilt 2001	Operational
Carragh Mhor (Islay)	1928			Operational
Esha Ness • (Shetland)	1929	1974		Operational Cottages privately owned
Sleat Point (Skye)	1934		Rebuilt 2003	Operational
Tor Ness • (Orkney)	1937		Rebuilt 1990	Operational
Rubh Uisenis (Lewis)	1938		Rebuilt 1989	Operational