

AN ENGINEERING ASSESSMENT OF THE KILMARNOCK & TROON RAILWAY 1807-46

obtained in 1808. From 1808 Wilson set out the railway and basic harbour and on their completion by 1812 managed both operations for the duke and also the extensive subsequent development of the harbour, including docks, until at least 1837, when he was listed in a directory as a 'civil engineer'¹¹. He had acted in this capacity for at least two decades previously, before which he practised as a land surveyor. His earlier work for the marquis included the preparation of plans of Fullarton House and Skelmorlie estate in 1806. By 1837 the shipping trade of Troon had increased to 1,060 vessels employing 4,996 men and the port was exporting about 100,000 tons of coal annually¹².

The railway was almost certainly operational to Troon, with at least one track from the public road at Gargieston near Kilmarnock, by July 1811 and completed by July 1812¹³. In 1816, nine years before the opening of the Stockton and Darlington Railway with its locomotives and malleable iron edge rails, the K&TR had the distinction of carrying the earliest locomotive in Scotland, the first to be ordered from George Stephenson outside Killingworth¹⁴, although not with sufficient success to replace horse traction.

Despite the drawbacks of plate-ways by comparison with edge railways, in that they required a greater tractive effort to pull the same load in the proportion of 10 to 7¹⁵, the constant cleaning off of debris by 'surfacemen' and continual repair arising from breakages and subsidence, the K&TR still had an economic advantage of about three times over road carriage. The cost of coal cartage by road was then of the order of 8³/₄d to 1s 5d per ton-mile^{16,17}, compared with 3¹/₂d per ton-mile for the railway, of which 1¹/₂d was for dues and 2d for traction¹⁸. These figures accord broadly with the then generally accepted design parameters that a good horse could pull a load on the level, exclusive of the unladen weight of the conveyance, of about 1¹/₄ tons on a broken stone road or 10 tons on a railway¹⁹.

An advantage of the flat plate rails was that they enabled the company to accept any traffic, including carriages and carts from adjoining roads, complying with its regulations and meeting the dues. Under the company's by-laws, any traffic with flat-soled wheels not less than 3 inches wide and meeting the track gauge and weight restrictions, of not more than 2¹/₂ tons gross for waggons and 28 cwt net for carts, were allowed access to and from the railway by means of frequent 'turnouts'²⁰. This convenient facility understandably encouraged a 'great deal'²¹ of use, particularly by carts, but Strickland noted that they had 'a very injurious effect' on the rails 'arising from the roughness of the tire on their wheels and from the soil which adhered to them being deposited on the flat part of the rails'²².

Unexpectedly, for what was intended as a mineral line, the K&TR turned out to be the first public railway in Scotland to carry fare-paying passengers. It is known that passengers were being carried by waggon, presumably on a tonnage basis, as early as 24 August 1811 because of a fatal accident on that date at about two miles from Kilmarnock (near Third Part Burn):

Professor Roland Paxton

'The waggon was returning with a number of people from the Troon by the railway when harnessing gave way and, owing to the darkness of the night, the waggon tumbled down a precipice of seven or eight feet perpendicular. One man unfortunately was killed and some so severely hurt that their lives are despaired of²³.'

A regular passenger service by 'Caledonia' coach began on 1 May 1813²⁴. By 1826 the railway, which was continuing to serve the 'fashionable sea-bathing town of Troon' over its 'handsome' Milton Bridge, had its own descriptive itinerary²⁵. The amount of passenger usage in 1837-38 can be gleaned from the £88 14s 5d paid in tonnage dues which equates to approximately 200,000 passenger miles travelled in 12 months. This travel probably represented two or three return trips per day between termini, increasing to four or five trips daily in summer, a modest usage compared with freight (Fig 2)²⁶. Coal dues alone for the same period were about 80 times greater at £7,196 11s 1d²⁷.

As more efficient locomotive operated railways spread nationwide in the

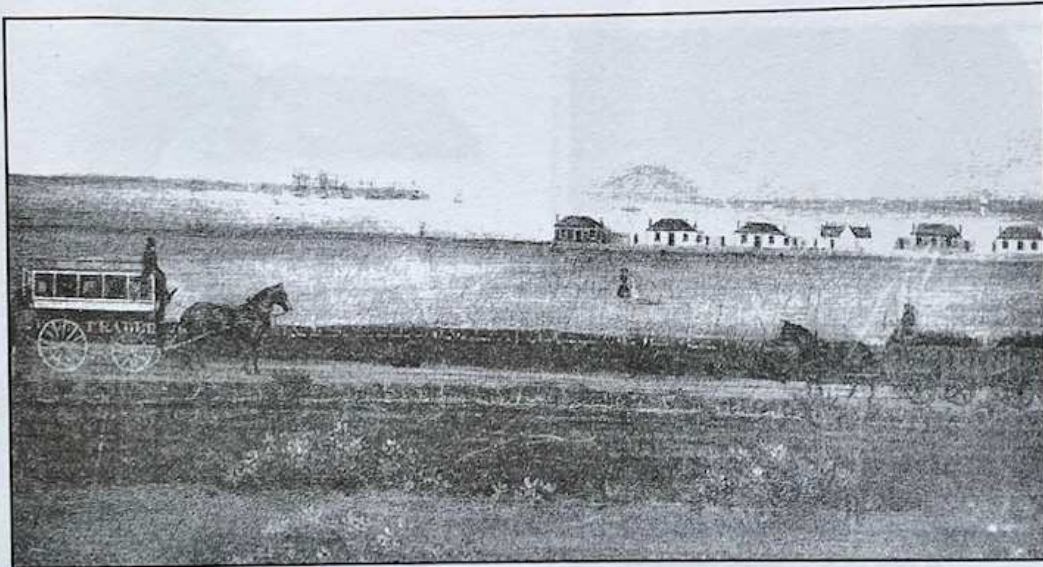


Fig 2. Passenger and coal carriage. East Ayrshire Council Museums and Arts Services. Oil painting at Dick Institute, Kilmarnock, not dated, unsigned. Courtesy EACM&AS, Kilmarnock.

late 1830s the K&TR with its slow travel and high maintenance costs, despite its continuing profitability and user-convenience, became increasingly outdated. In 1836 George Stephenson examined the line for a possible take-over by the Glasgow & Ayrshire Company and recommended that its directors should try to influence the Duke of Portland to alter and improve it by re-gauging and re-railing with malleable iron edge rails to larger curve radii²⁸. A plan of this date shows a 2½ mile length of the existing line, including the

AN ENGINEERING ASSESSMENT OF THE KILMARNOCK & TROON RAILWAY 1807-46

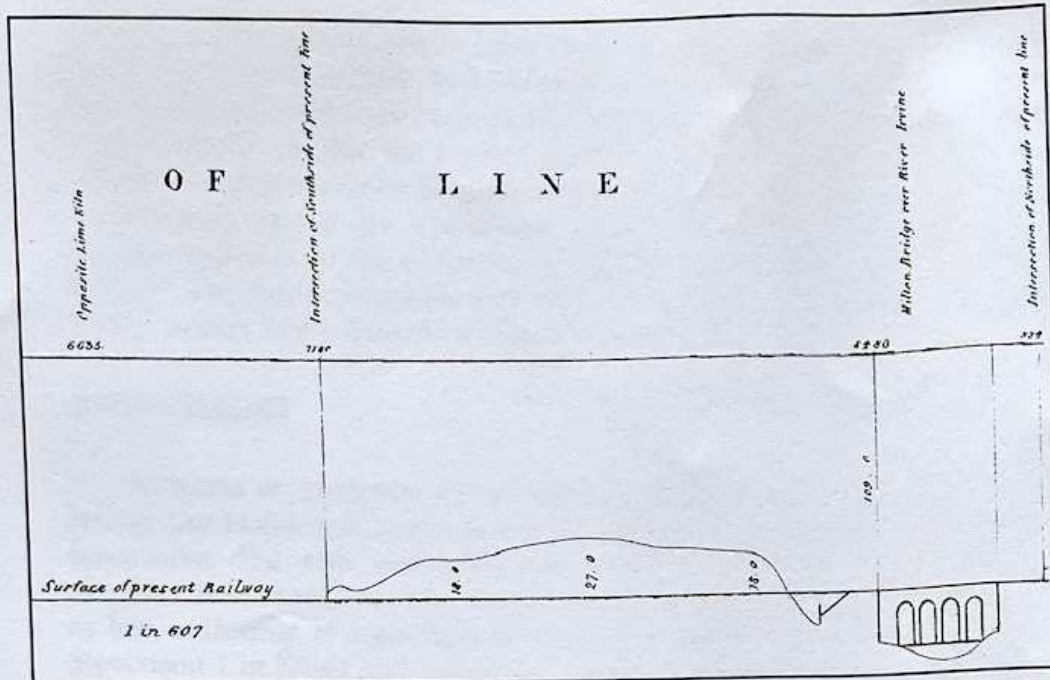


Fig 3. Laughlen's section, 1836, west approach to viaduct. Ayrshire Archives, ATD 13/14/1. And. Laughlen, Irvine. Plan of part of the present line of Kilmarnock & Troon Railway, and proposed alterations: in the parishes of Dundonald & Kilmaurs, 1836. Courtesy Ayrshire Archives.

earliest known drawn elevation of Milton Bridge (**Fig 3**)²⁹ and proposed curve improvements which were implemented about a decade later. This plan also shows part of the 1818 private Fairlie branch of 3 feet 4 inches gauge to Drybridge abandoned in c1849 with the opening of the new branch east of Gatehead. Eventually, following Stephenson's advice to avoid an expensive acquisition, the K&TR was leased by the Glasgow, Paisley, Kilmarnock & Ayrshire Railway and upgraded.

The original K&TR line was closed to most traffic on 20 July 1846³⁰, but Milton Bridge was almost certainly still being used by some coal traffic in November 1846³¹. By Spring 1847 the old viaduct had been abandoned, being by-passed by a timber viaduct on a curve immediately to the south, the construction of which was well advanced by September 1846³² and which was, in turn, by-passed by the present line in 1865³³.

GENERAL DESIGN AND CONSTRUCTION

The railway, which was horse-operated, originally under by-laws of 4 November 1811 'at no faster than a walk', consisted of two, 4 feet gauge cast iron plate-ways termed 'horse paths' filled with hard angular broken stone to near the top of the rail upstands. A central 'attendants' path, said to have been

Professor Roland Paxton

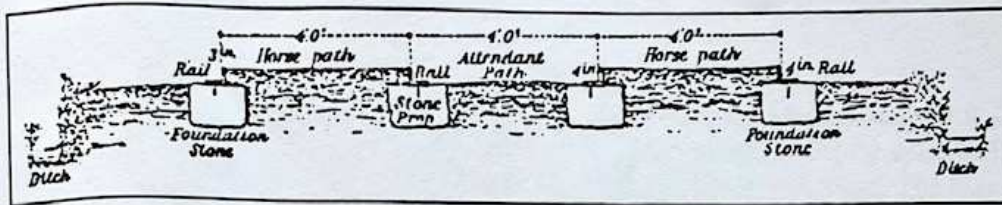


Fig 4. Cross-section c1826. W Strickland, *Reports on canals, railways* . . . (Philadelphia, 1826).

of 4 feet width was provided but, according to an informed observer William Aiton, for flexibility of operation during maintenance, 'a horse may travel in the middle space, with a wheel on the inner range of each of the roads³⁴'. For this arrangement to have operated, the rails at each side of the central path must have been 4 feet apart between their lower edges or 4 feet 8 inches clear between upstands and this dimension on Strickland's cross-section is incorrect (Fig 4)³⁵.

Aiton also referred to 'frequent communications from one road to the other so as not only to admit of carriages going both ways; but to allow one carriage to pass another when both are travelling in one direction'. The railway:

'has been laid off, with all the skill and to every advantage which the situation of the ground would admit. The turns are not sudden or abrupt; but gentle and easy sweeps [for horse traction]. In some places the road is sunk and in others it is raised many feet above the general level of the ground . . . the whole is executed with the utmost skill and all the frugality which local circumstances would admit.'

The line passed:

'for about a mile through Shoalton-moss [Shewalton], which is between 30 and 40 feet deep in some places and extremely soft. Two deep drains have been cut laterally on each side of the railway and others are opened in a contrary direction; but from the extreme moist and soft quality of the moss and its tenacity in retaining water while it remains unbroken, these drains have not rendered it either dry or solid (Fig 1 at 4 miles from Troon). Sand has been laid on the surface of the moss for several inches in depth under the blocks and rails. The greater part of the last two miles towards the harbour has been raised by embankments in some places 10 or 12 feet in height³⁶.'

In 1826 Strickland wrote of the railway through the moss being formed :

'without any other precaution than a low embankment made of sand and gravel mixed with loam. The top surface is coated over with fine coal brought from collieries in the neighbourhood and a good drain is formed on each side of the embankment, which is raised about two or three feet above the level of the moor³⁷ (Fig 4).

Most of the engineering works of the railway, costing about £42,000³⁸, were constructed by direct labour under the direction of the resident engineer

AN ENGINEERING ASSESSMENT OF THE KILMARNOCK & TROON RAILWAY 1807-46

Thomas Hollis, who seems to have been allowed considerable autonomy by Jessop in the work as built. Milton Bridge and the single span Dry Bridge over the Dundonald road were built under contract for £4,088 18s 1d³⁹, about 90 per cent of which was for the former, almost certainly by Telford's 'treasure of talents'⁴⁰ stonemason John Simpson (d 1816), who about that time was working at Ardrossan and on the Caledonian Canal. He had just completed Ballater Bridge, timber from the centering of which was probably re-used at Milton Bridge⁴¹. Dry Bridge bears the date 1811. Milton Bridge completed in the same year probably had a date stone which was lost by weathering.

ASSESSMENT

In terms of suitability for purpose the engineering practice adopted by Jessop and Hollis was competent at the time, economical but not particularly innovative. The rails and bridge-work will be referred to separately. An excellent feature was the adoption of a continuous inclined plane falling more or less uniformly at a gradient of about 1 in 66042 (Dupin states 1 in 56743, Stevenson 1 in 57644 and Laughlen 1 in 607 east of Drybridge — **fig 3**, page 86)⁴⁵ from Kilmarnock to Troon harbour, thus enabling a horse to draw at least three waggons, each of 13 cwt and containing about 33 cwt of coal easily down to the harbour at 3 mph and to return without difficulty against the gradient with the empty waggons. Manual excavation and embankment costs to achieve this profile were of the order of 6d to 1s per cubic yard. It is probable that this task which involved depths of in excess of 20 feet (**Fig 3**, page 86)⁴⁶ was facilitated in some sections by use of the railway. Other good design features were the double-track layout, frequent cross-overs and turn-outs resulting in a general high degree of flexibility for users, and the robust side drainage to keep the track dry and stable. The crossing of Shewalton Moss almost gave certainly a great deal of trouble and floating the railway on a raft of branches and brushwood, such as was successfully done later at Chat Moss, might have offered a better solution.

PLATE RAILS

The cast iron plate rails used were basically of the type previously used by Jessop on the Surrey Iron Railway c1803 and for moving earth and other materials during the construction of the Caledonian Canal. Each rail was 3 feet long with a longitudinally curved upstand increasing from about 2 inches deep above the running surface at its ends to 3 inches at mid-length and a deepening of its front edge $\frac{1}{4}$ inch below the base between the end-pads, features which added to its strength (**Figs 5 & 6**, page 89).

Conditions for rail manufacture were set out in a printed tender invitation

Professor Roland Paxton

of 1809:

Proposals will be received by the Committee for the Management of the Kilmarnock Rail-way, for the whole, or part of 1000 tons of rails, to be delivered at the Troon, and at Kilmarnock; stating the price per ton at each place. The rails to be of the weight of 40 pounds each rail; to be cast from iron patterns furnished to the contractors by the rail-way company. Wood patterns, or any others than those provided by the company, on no account to be used.

The metal not to be run into the moulds at the ends where the rails are to be joined together; neither are air gates to be made at the ends.

The rails to be good clean castings, free from sand; the quality of the iron to be stout grey metal and open grained in its fracture.

The holes or notches at the ends to be clean and to the full size of the patterns; and so that when two rails are joined, the holes and flanges shall correspond exactly.

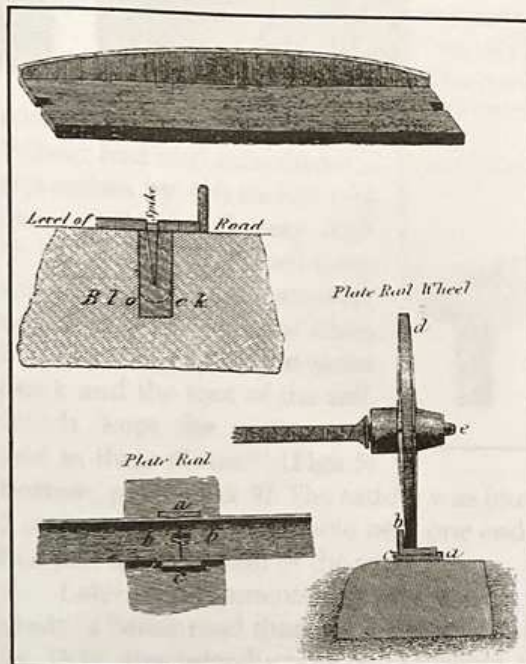


Fig 5. Plate rail details. Stevenson (bottom), R Stevenson, 'Railway,' *Edinburgh Encyclopaedia*, 17 (1830), pp 303-310, pl 477, first published 1824, **and Buchanan, G** Buchanan, 'Railway.' Supplement to the fourth, fifth and sixth editions of the *Encyclopaedia Britannica*, 6 (1824), pp 413-418, pl 115, **with minor changes.**



Fig 6. Whinstone block (above) and Glenbuck plate rail and spike c1810 found on site.

AN ENGINEERING ASSESSMENT OF THE KILMARNOCK & TROON RAILWAY 1807-46

The whole of what may be contracted for, to be delivered on or before the day of in the year 1810.

The nails to be made in a bore corresponding with the two half-holes of the rails, or $1\frac{1}{2}$ in wide by 1 in. at the top, and $\frac{7}{8}$ ths by $\frac{1}{2}$ in at the bottom of the head; to be not more than 5 in nor less than $4\frac{3}{4}$ ths [sic] long.

The nails on no account to have a flash on the head, but made so that the nails will fill the hole without being above the surface of the rails⁴⁷.

The Kilmarnock Foundry tendered for making and delivering the above rails at £12 per ton, the Clyde Iron Co at £11 per ton, David Smith, Airdrie at £11 per ton with discount 2s 6d per ton cash on delivery, and the Glenbuck Iron Co [near Muirkirk] at £10 7s 6d. The Glenbuck tender was accepted and by 1813 this company had been paid £13,345 8s 8d for about 72,000 rails⁴⁸ (Fig 6, page 89). Each rail therefore cost about 3s $8\frac{1}{2}$ d. In addition, Jessop supplied cast iron costing £1,000 which may have been for rails. From 1815 almost identical rails with the word 'Kilmarnock' on the underside of the casting from

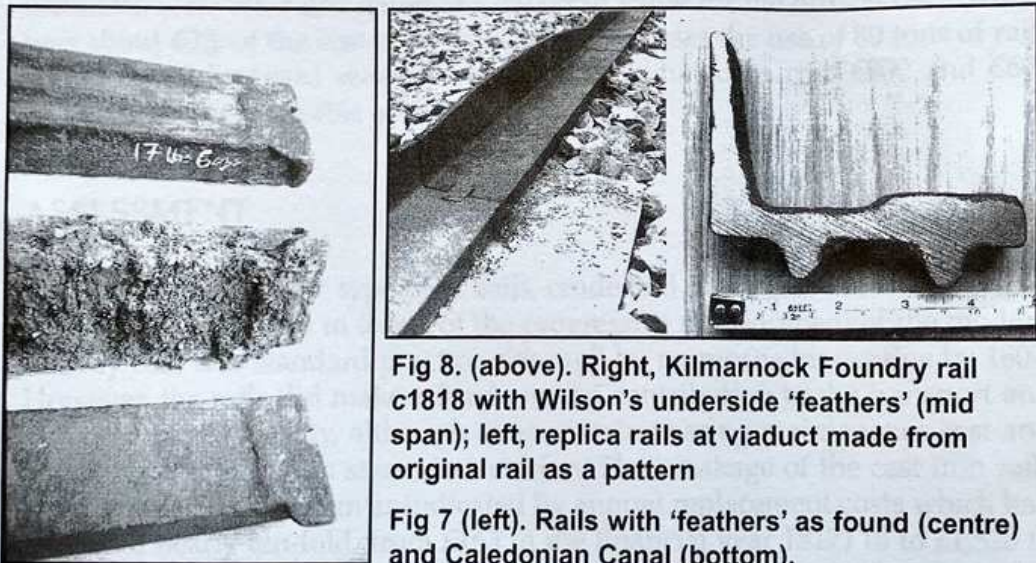


Fig 8. (above). Right, Kilmarnock Foundry rail c1818 with Wilson's underside 'feathers' (mid span); left, replica rails at viaduct made from original rail as a pattern

Fig 7 (left). Rails with 'feathers' as found (centre) and Caledonian Canal (bottom).

the Kilmarnock Foundry began to be used as replacement rails.

A study of the K&TR records indicates a considerable increase in the incidence of breakages for the year from September 1816, which seems to have induced Wilson to introduce a rail 'with a small improvement by myself . . . having two feathers on the under side . . . not so liable to break . . . adopted in all our renewal of rails⁴⁹' (Figs 7 & 8). In fig 7 a 'Jessop' type rail from the Caledonian Canal works c1810 is shown for comparison purposes. It is similar to the Glenbuck rails but without any deepening of the front edge. By March 1819 replacements from Kilmarnock Foundry and weighing 38-40 lbs were

Professor Roland Paxton

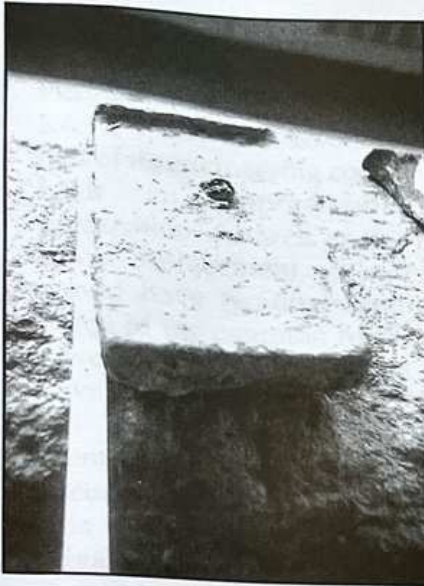
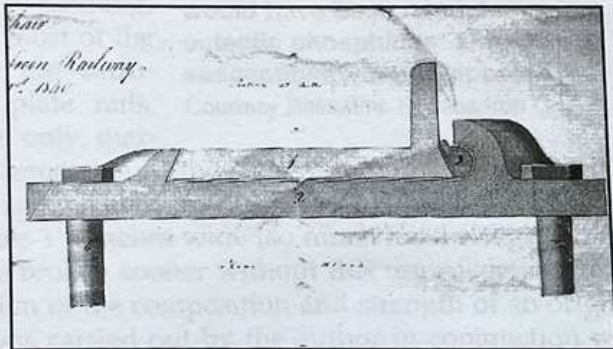


Fig 10 (above). Four feet diameter curved plate rail, found on site.

Fig 9 (left). Wilson's saddle, spike and block, all found on site.

Fig 11 (below). Malleable iron rail in use by 1840. EACM&AS, Dick Institute, Kilmarnock, 'Plan and section of rail and chair used on the Kilmarnock & Troon Railway, March 1840. Courtesy EACM&AS, Kilmarnock

costing about 3s 2d⁵⁰. By 1824 Wilson had also introduced a 6¹/₄ inches by 4¹/₄ inches cast iron saddle ³/₄ inch deep with ¹/₂ inch wide by ¹/₄ inch deep upstands along the narrower edges to retain the rail ends, between the top of the stone block and the foot of the rail, which 'kept the joints even and in their places'⁵¹ (Figs 5, **bottom**, page 89, & 9). The saddle was found with a 4 feet radius plate rail with 2 inches upstand and a hole near one end (Fig 10) and other items in the river bed just downstream of the viaduct.



Later developments were the use of cast iron rails in 6 feet lengths, which made 'a better road than the 3 feet rails still the breakage is considerable⁵²' and, by 1839, the introduction of malleable iron plate rails, probably in 15 feet lengths and supported by stone blocks. Some malleable iron rails were laid on timber in 1840 which were 'still fresh and good' in 1842⁵³. Rails of this type were laid on the viaduct in 1845. No surviving rails are known, but details are given on a drawing of 1840 (Fig 11)⁵⁴. During laying, rails were secured in place at each end by means of the tapering head of the malleable iron nail described in the above tender document (Figs 5 & 6, page 89). The nail was driven into an oak plug within an 1¹/₂ inches diameter hole 5 inches deep in a stone block made of either whinstone or freestone. The block generally measured 12 inches

AN ENGINEERING ASSESSMENT OF THE KILMARNOCK & TROON RAILWAY 1807-46

STEAM LOCOMOTIVE TRIAL 1816

In late 1813 the Duke of Portland considered but did not proceed with the purchase of a Blenkinsop locomotive to haul coal from his collieries⁵⁹, but in 1816 he is understood to have bought a Stephenson Killingworth-type locomotive with six, flat-soled wheels, each with steam piston springing, in order to spread its weight⁶⁰ (Fig 13, page 93)⁶¹. The engine was appropriately named *The Duke* and, according to eye-witness John Kelso Hunter, its trial was conducted by Robert Stephenson⁶², George Stephenson's brother — not, as mistakenly assumed by Highet⁶³, his son Robert who would then have been only 13 years old. It is recorded that the engine 'from its defective construction and ill adaption to the rails drew only ten tons at the rate of five miles an hour⁶⁴.' Its central chain-drive cog-wheel transmission occasionally caught on high sections of the horse path and caused bending of its axles and wheel connecting rods⁶⁵. According to George Buchanan in 1831, the locomotive had 'succeeded well' but was given up on account of its destructive effect on the cast iron rails although its weight was only five tons⁶⁶ [or 7½ tons⁶⁷]. It is understood that on conclusion of this trial no further attempt was made to introduce steam power on the railway⁶⁸. The engine is said to have been sold in 1848 for £13. Thomas⁶⁹ states that it remained in use from its introduction until 1848 but this is unconfirmed.

ASSESSMENT

The load hauled by the locomotive was little more than that pulled by a good horse, although at about twice the velocity, advantages more than outweighed by the considerable costs involved, not least for the replacement of broken rails. Horse traction continued. Modern calculations indicate that a wheel load of 1.7 tons, which would have been easily achievable at times with the primitive locomotive's hammer-blow effect and rocking, would have been sufficient to break a rail in shear near the edge of a block. The same rail without adequate support between blocks would probably have broken in bending with a 2 ton load. Of five broken rails found, all were broken from 5 inches to 12 inches from one end.

For many years the date of this trial has been a matter of uncertainty, 1816, 1817 and 1820 having been cited⁷⁰. A study of railway company payments to the Kilmarnock Foundry for replacement rails and castings revealed a significant increase in expenditure from September 1816, indicating that the locomotive was probably in use by then (Fig 14, page 95)⁷¹. Its duration in use is not known although the histogram suggests less than a year. If the locomotive had been operational in the summer of 1817 it would almost certainly have been noted by Dupin on his technological fact finding tour of

Professor Roland Paxton

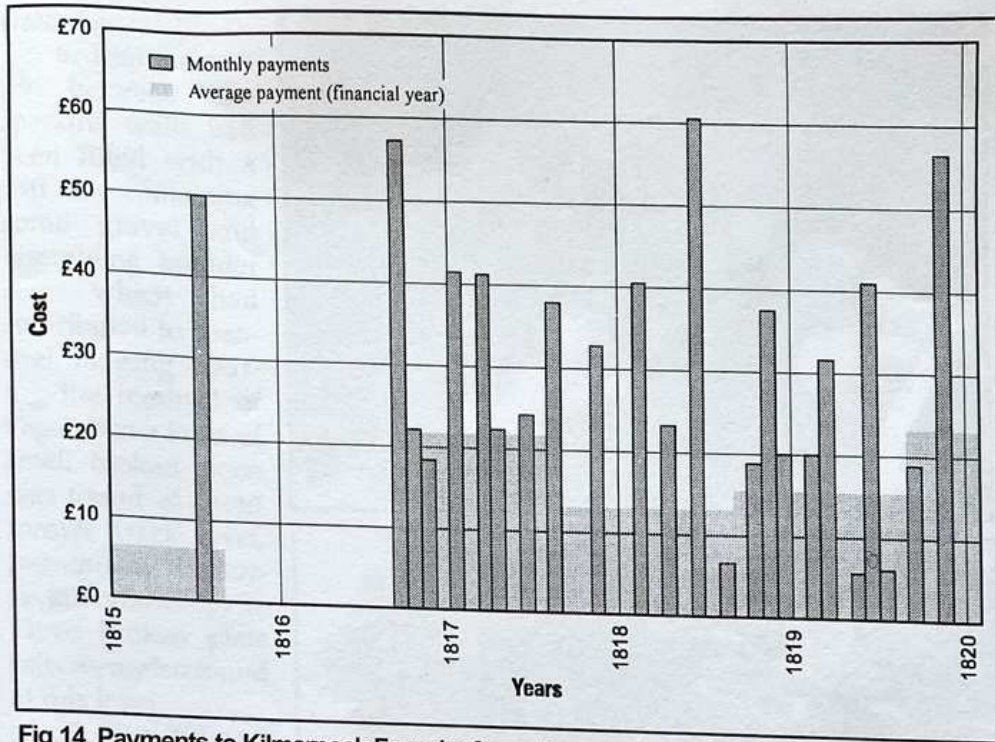


Fig 14. Payments to Kilmarnock Foundry for replacement rails and castings 1815-19.

Britain. He was impressed by the railway's passenger carrying role noting 'diligences on the railway which conveyed the idea of an enormous wandering vehicle drawn without difficulty by a single horse⁷²'. Another version reads 'the stage coach has four iron wheels; it is like a caravan and drawn full of passengers with only one horse⁷³'.

LAIGH MILTON VIADUCT DESIGN AND CONSTRUCTION

The viaduct, which is about 270 feet long and 19 feet wide overall, carried the railway about 25 feet above the river on four 40 feet span freestone arches with 9 feet wide piers. Each arch is of segmental elevation with a rise of one third span and with 2 feet deep arch rings (Fig 13, page 93). The approaches have curved wing walls. No evidence was found that parapets ever existed. In the absence of any drawings or specification the preservation work provided a valuable opportunity to study the viaduct's construction. The main findings were that:-

1. The piers were constructed in cofferdams because agreement could not be reached to dewatering the site by temporarily dismantling Milton mill dam.

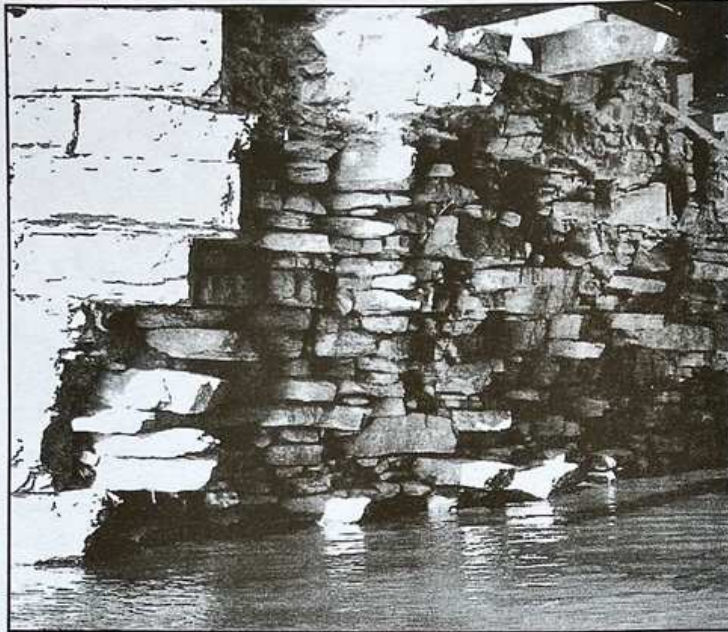


Fig 18 (top). West pier, east side — erosion into lime-mortar-bedded hearting

Fig 19 (bottom). South 'stepped' spandrel wall and undressed extrados of arch

CONCLUSION

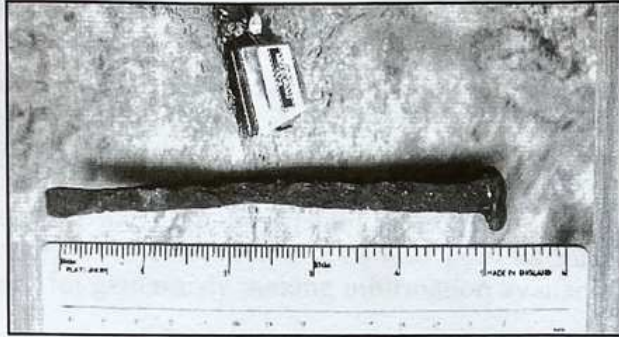
That much of the present railway follows the line and level determined by Jessop and Wilson is a useful and welcome legacy to posterity, but the most significant survivor of the original K&TR is the viaduct. Its outstanding historical significance rests on its association with Scotland's first public railway and its beneficial impact on society, the eminent Jessop, its use by Stephenson's locomotive in 1816 and in being the earliest surviving viaduct built under a public railway act. The structure was not on a particularly large scale for its date and its functional and economical design and construction followed normal late 18th rather than the most advanced early 19th Century practice.

In terms of its design and construction the via-

Professor Roland Paxton

Fig 20 (right). Five inch wrought iron lining-up pin at top of west arch *in situ* and after removal.

Fig 21 (below). East arch, north side, showing crumbling masonry and bulging spandrels



AN ENGINEERING ASSESSMENT OF THE KILMARNOCK & TROON RAILWAY 1807-46

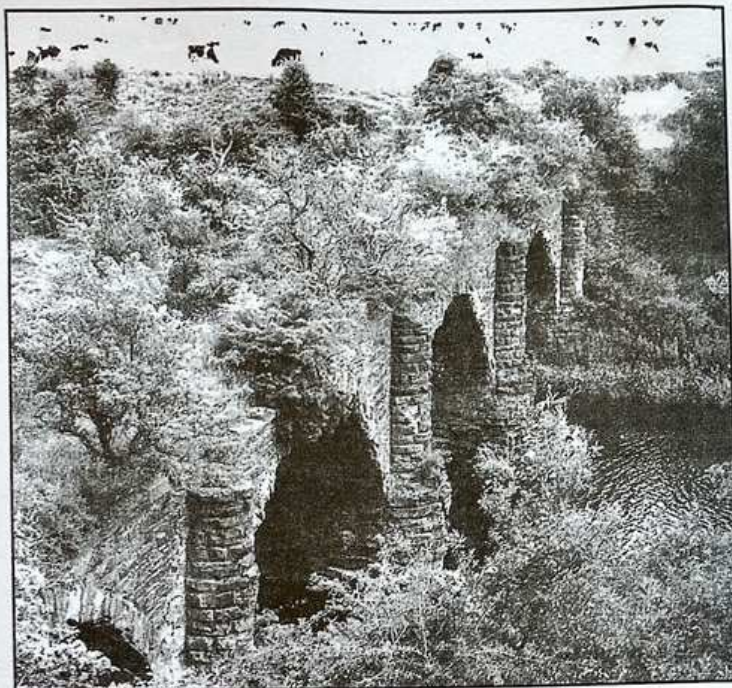
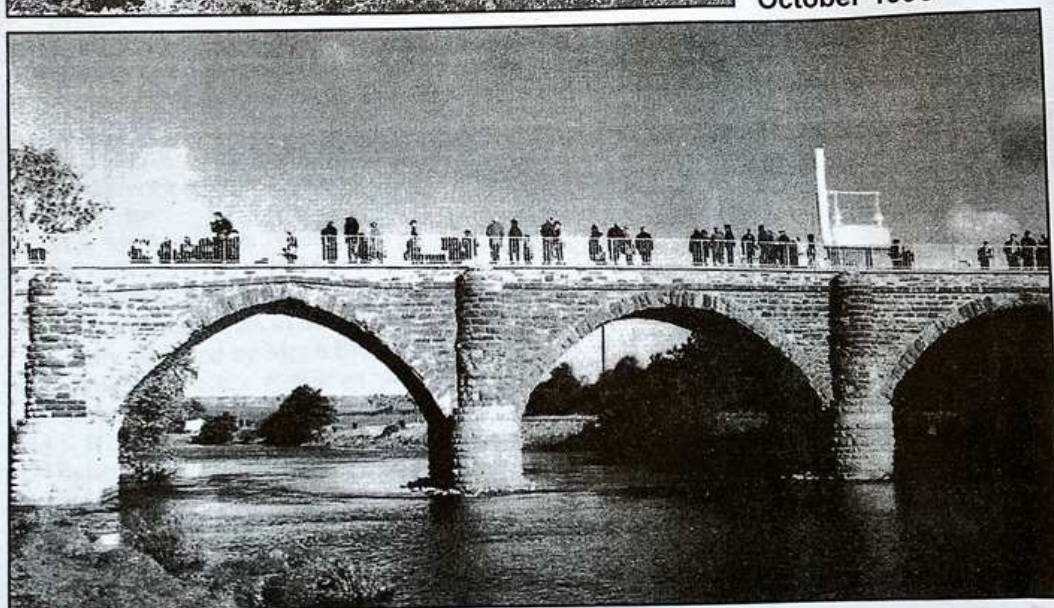


Fig 22. Viaduct in imminent danger of collapse, 1992

Fig 23. Conserved viaduct at re-opening on 29 October 1996



duct can be considered commensurate with Aiton's general assessment for the railway of a combination of frugality and skill, with just enough of the latter to barely survive one and a half centuries of neglect. The viaduct is now fittingly preserved as closely as practicable to its original 'handsome' state (Figs 22 & 23).

Professor Roland Paxton

ACKNOWLEDGEMENTS

To Mr John Kelly site agent for Barr Construction and the firm's workmen for their diligence and interest in finding historic items and bringing them to the author's attention, including those shown in **figs 6,7,8,9, and 20**. These artefacts are now preserved and displayed as part of the Institution of Civil Engineers museum in Scotland at the Civil & Offshore Engineering Dept, Heriot-Watt University, Edinburgh. To the organisations and persons mentioned in the notes and captions for generously making information available.

NOTES

- 1 R Stevenson, 'Railway', *Edinburgh Encyclopaedia*, 17 (1830), pp 303-310, pl 477. First published 1824.
- 2 R Stevenson, *Report relative to various lines of railway from the coalfields of Midlothian* (Edinburgh, 1819).
- 3 J Wilson, *Plan of a proposed line of rail way or tram road, from Kilmarnock to Troon* (1807), engraving. Also published with text in *Scots Magazine*, Jan 1812.
- 4 *New Statistical Account of Scotland*, 5 (1845), pp 683-684. Written 1841.
- 5 *ibid* p 554. Written 1839.
- 6 R A Paxton, 'Conservation of Laih Milton Viaduct, Ayrshire', *Proceedings of the Institution of Civil Engineers - Civil Engineering*, 126/2 (May 1998), p 74.
- 7 Campbell Hight, *The Glasgow and South Western Railway* (1965), pp 4-8.
- 8 NSAS, p 543.
- 9 Wilson, *Plan*.
- 10 Act, 48. Geo III, c 46.
- 11 *Pigot & Co's national commercial directory of . . . Scotland* (1837), pp 281-282.
- 12 *ibid*.
- 13 NSAS, p 543.
- 14 C F Dendy Marshall, *Early British locomotives* (1939), p 67.
- 15 Stevenson, *Report*.
- 16 R Bald, *A general view of the coal trade of Scotland* (1808), p 34.
- 17 C J A Robertson, *The origins of the Scottish railway system 1722-1844* (1965), pp 24-28.
- 18 NSAS, p 554.
- 19 T Tredgold, *A practical treatise on rail-roads and carriages* (1825), p 169, pl 1.
- 20 G Buchanan, 'Railway', *Supplement to the fourth, fifth and sixth editions of the Encyclopaedia Britannica*, 6 (1824), pp 413-418, pl 115.
- 21 *ibid*.
- 22 W Strickland, *Reports on canals, railways, roads and other subjects. made to the Pennsylvania Society for the Promotion of Internal Improvement* (Philadelphia, 1826).
- 23 *Glasgow Herald*, 30 Aug 1811.
- 24 *Kilmarnock Standard*, 21 Apr 1889.
- 25 *Duncan's Itinerary of Scotland* (Glasgow, 1826), p 116.
- 26 East Ayrshire Council Museums and Arts Services. Oil painting at Dick Institute, Kilmarnock, not dated, unsigned.
- 27 Scottish Record Office, BR/KTR/1/2.
- 28 G Stephenson, 'Mr Stephenson's report 16 Oct 1836', *Proceedings of the first general meeting . . . Glasgow, Paisley, Kilmarnock & Ayr Railway* (Glasgow, 1836).
- 29 Ayrshire Archives, ATD 13/14/1. And. Laughlen, Irvine. Plan of part of the present line of Kilmarnock & Troon Railway, and proposed alterations: in the parishes of Dundonald &

AN ENGINEERING ASSESSMENT OF THE KILMARNOCK & TROON RAILWAY 1807-46

- Kilmaurs, 1836.
- 30 Highet, G&SWR.
- 31 Ayrshire Archives, ATD 13/14/3. Letter 18 Nov 1846.
- 32 *Kilmarnock Standard*, 24 Sept 1846.
- 33 Highet, G&SWR.
- 34 W Aiton, *General view of the agriculture of the County of Ayr* (1811), pp 554-561.
- 35 Strickland, *Reports*.
- 36 Aiton, *Ayr*.
- 37 Strickland, *Reports*.
- 38 C Hadfield and A W Skempton, *William Jessop, Engineer* (1979), pp 181-182.
- 39 SRO, BR/KTR/1/1, pp 18-54.
- 40 Sir A Gibb, *The story of Telford* (1935), p 33.
- 41 Private. Letter from J. Simpson to W. Farquharson, Mar 1810. Information kindly supplied by Dr T Day, Aberdeen.
- 42 Buchanan, *Britannica*.
- 43 C Dupin, *Narrative of two excursions to the ports of England, Scotland and Ireland, in 1816, 1817, and 1818* (1819), p 47.
- 44 Stevenson, *Railway*.
- 45 Laughlen.
- 46 *ibid*.
- 47 Nottingham County Record Office, DD4P 77/14, Handbill. Reprinted in G Kirkpatrick, 'The Kilmarnock and Troon Railway', *Backtrack*, 6/1 (Jan-Feb 1992), p 43 .
- 48 SRO, BR/KTR/1/1, 18-54.
- 49 National Library of Scotland, Ms Acc 10706, 76.5. Letter from J Wilson to R Stevenson, 10 Jan 1818.
- 50 SRO, BR/KTR/4/1.
- 51 J. Gregory, *A complete course of civil engineering* (c1841), pp 127-128.
- 52 SRO, BR/KTR/1/2.
- 53 *ibid*.
- 54 EACM&AS, Dick Institute, Kilmarnock, 'Plan and section of rail and chair used on the Kilmarnock & Troon Railway, March 1840'.
- 55 Aiton, *Ayr*.
- 56 NLS, Ms Acc 10706, 76, 5.
- 57 SRO, BR/KTR/1/1, 18-54
- 58 SRO, BR/KTR/4/1.
- 59 E A Forward, 'Links in the history of the locomotive', *The Engineer*, 31 Jan 1930. Information kindly supplied by Mrs S Bye.
- 60 N Wood, *A practical treatise on rail-roads* (1825), p 124, pl 4.
- 61 Composite view drawn by Mr Graham Douglas to the author's specification.
- 62 J K Hunter, *Retrospect of an artist's life* (1868), pp 98-100.
- 63 Highet, G&SWR.
- 64 NSAS, p 554.
- 65 Hunter, *Retrospect*.
- 66 G Buchanan, *An account of the Lanarkshire railways* (1832), p 4.
- 67 Wood, *Treatise*, p 245.
- 68 NSAS, p 554.
- 69 J Thomas, *A regional history of the railways of Great Britain, vol 6, Scotland . . . Borders*, (Newton Abbot, 1971), pp 19-20.
- 70 Highet.
- 71 SRO, BR/KTR/4/1.
- 72 Dupin, *Narrative*
- 73 C Dupin, *The commercial power of Great Britain*, 2 (1825), p 255.
- 74 SRO, BR/KTR/1/1, 18-54.