

LOCAL NEWS

Edinburgh publishes a guide to greatness

Visitors to the Edinburgh Festival usually sample the splendours of the New Town and the medieval glories of the castle and Royal Mile. But some of the more discerning soon come to realise that the capital city of Scotland also has some of the finest 19th century civil engineering structures in the country.

Local members have of course long recognised and treasured their local monuments and three of them — Dean Bridge by Thomas Telford, Leith docks and the Forth railway bridge designed by Fowler and Baker — have become the sites of annual association visits.

Many local associations arrange visits to similar structures and provide typed notes for visitors. But now the Edinburgh association has taken advantage of this situation and produced a properly printed and illustrated booklet titled *Our civil engineering heritage**

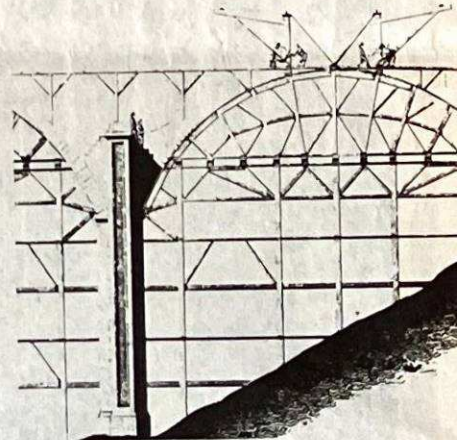
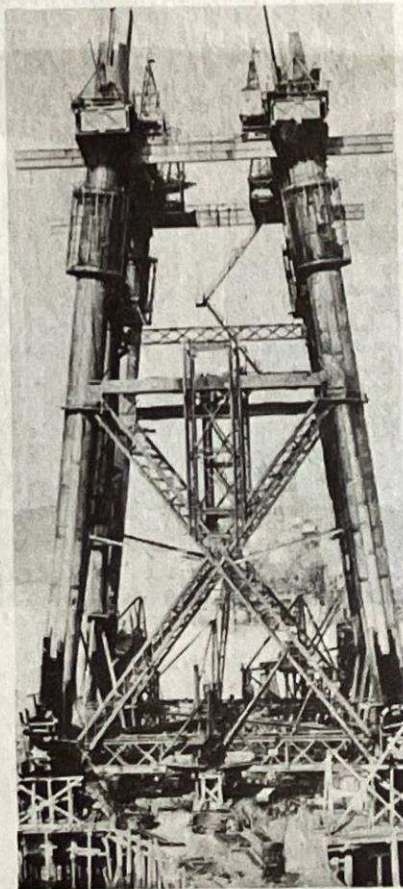
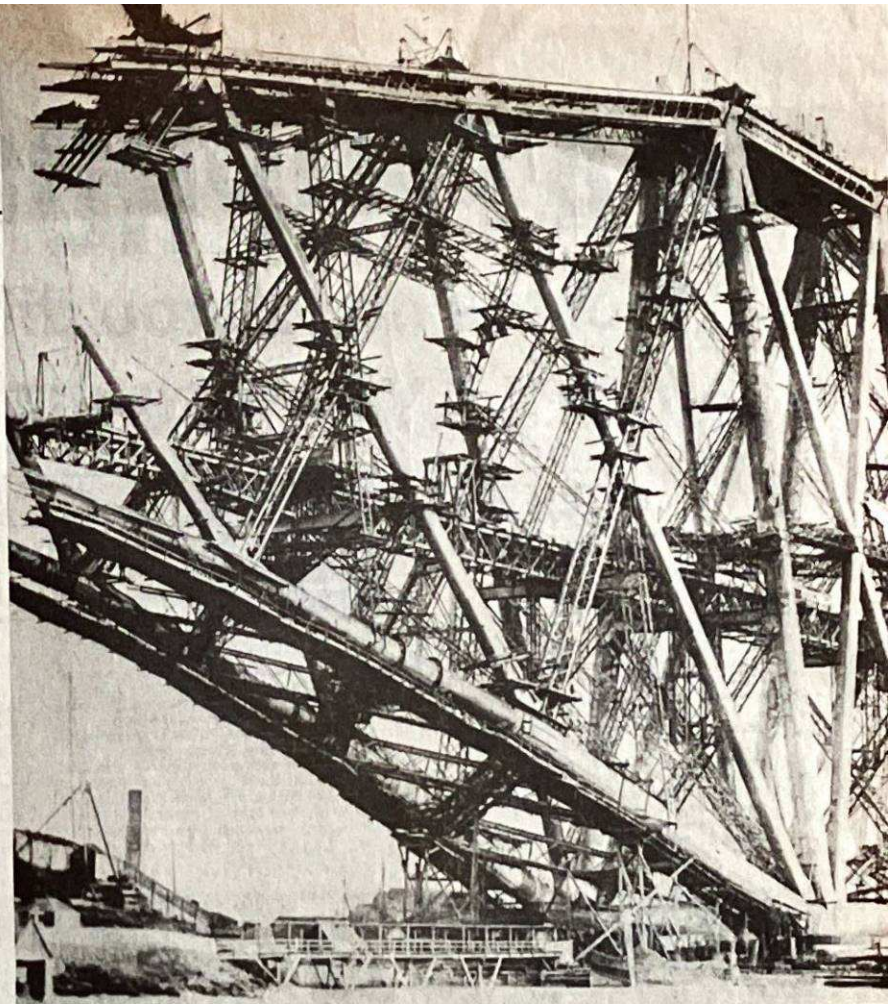
It contains precise and informative articles by Roland Paxton, Douglas McBeth and John Kerr with a number of illustrations, rare plans, drawings and photographs — a selection of which is reproduced here.

It is not meant to be yet another book on these three great structures but as a pocket guide it could not be bettered and is good value for money at £1 including postage. Its attraction is that it is as useful to individual visiting engineers as it is to ordinary members of the public.

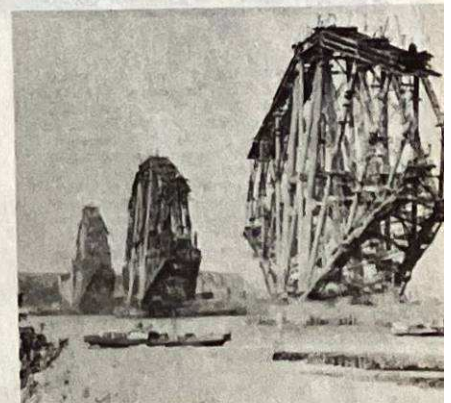
The possibility of a continuous sale has made possible an economic print run. Editor David Haldane, from whom it is available, points out that 'it is clear that there is a possibility that similar booklets can be published in other parts of the country. Our experience may be of help to other associations'.

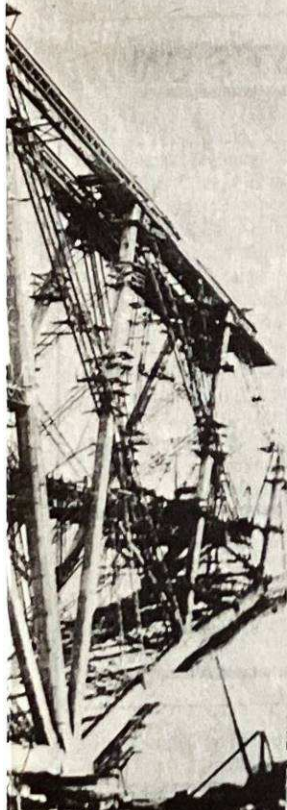
After the three members had agreed to write short descriptive chapters it was decided to produce a 32 page A5 booklet and 520 copies were printed at a cost of £425.

*Copies of our engineering heritage can be obtained price £1 from David Haldane, Department of civil engineering, Heriot-Watt University, Riccarton, Currie, Midlothian EH14 4AF.



ABOVE: Forming Dean bridges's arches. LEFT: Queensferry columns looking through the bridge. BELOW: all cantilevers nearing completion as seen from south Queensferry.





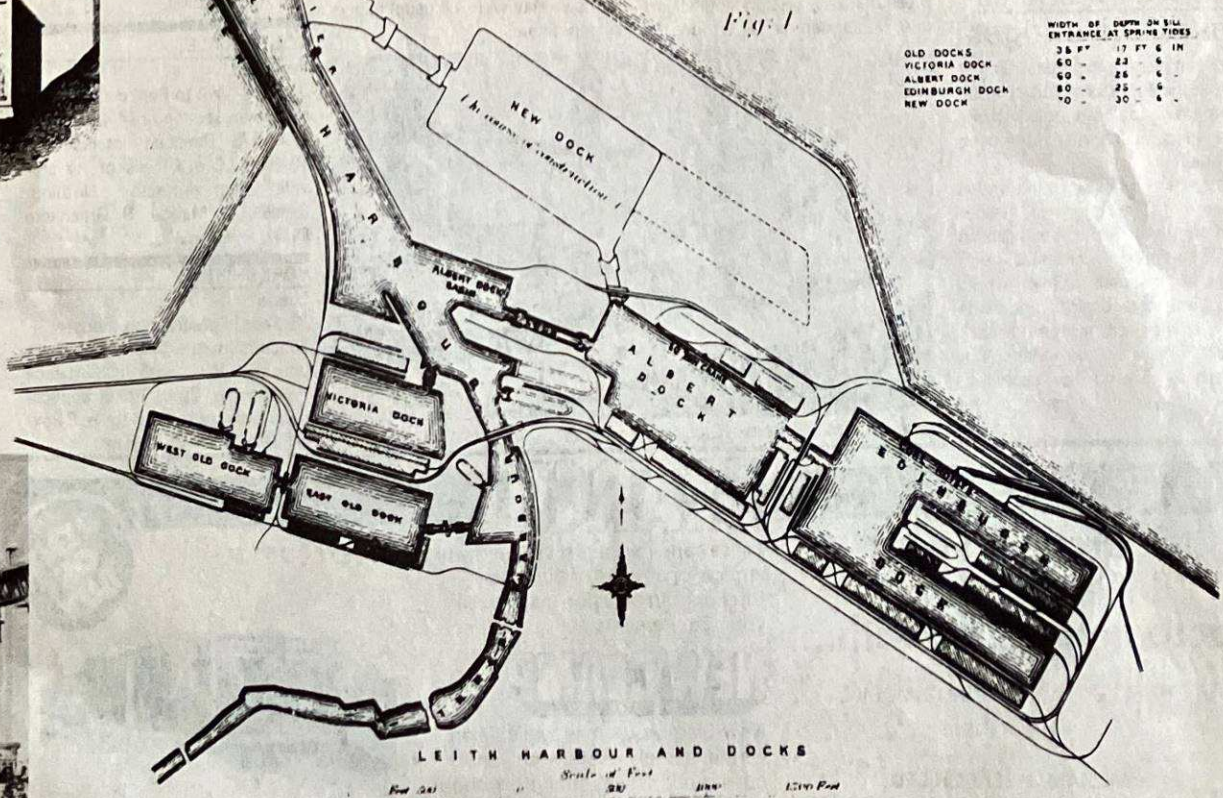
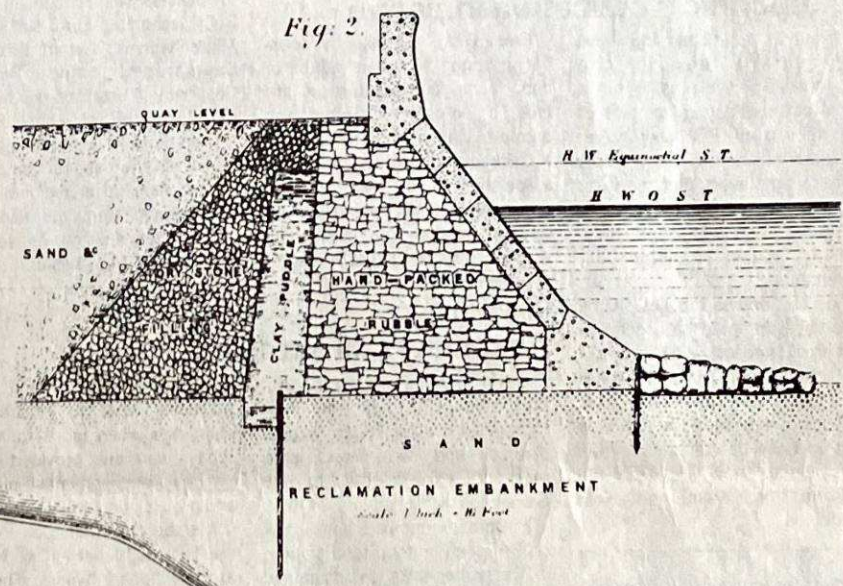
FAR LEFT: Forth bridge Fife cantilever.

LEFT: A workman stands in the hollow spandrel of Dean bridge.

BELOW: Peter Whyte's drawings for Leith harbour docks and reclamation embankment.

LEITH HARBOUR, DOCKS, AND RECLAMATION EMBANKMENT.

PLATE 10



	WIDTH OF ENTRANCE AT SPRING TIDES	DEPTH OF SILL
OLD DOCKS	38 FT	17 FT 6 IN
VICTORIA DOCK	60	22 6
ALBERT DOCK	60	25 6
EDINBURGH DOCK	80	25 6
NEW DOCK	70	30 6

Master of the works of the Harbour of Leith, Edinburgh, 1850-1860.